

## EasyOne™ Test Modes and Parameters

### FVC test:

FVC	MEF25 (FEF75)
FEV1	MEF50 (FEF50)
FEV3	MEF75 (FEF25)
FEV6	MEF25-75 (FEF75-25)
FEV1/FVC	PEF
FEV1/FEV6	Tzero
FEV/VC	BEV
FEV1var	EOTV
FEV6var	PEFT
FVCvar	FET

### FVL test (add. to FVC):

FVC
PIF
MIF25 (FIF75)
MIF50 (FIF50)
MIF75 (FIF25)

### SVC test:

VCmax
VCin
VCex
IC
ERV
IRV
VT
Rf

### MVV test:

MVV
BPM

## Specification and Technical Data

<b>Dimension:</b>	83 x 158 x 43 mm
<b>Weight</b>	245 g
<b>Measuring accuracy</b>	Volume: ± 2% or 0.050 l Flow: ± 2% or 0.020 l/s PEF: ± 5% or 0.200 l/s MVV: ± 5% or 5 l/min
<b>Resolution:</b>	Volume: > 1 ml Flow: 4 ml/s
<b>Measuring range:</b>	Volume: ± 12 l Flow ± 16 l/s
<b>Resistance:</b>	approx. 0.3 cm H <sub>2</sub> O/l/s
<b>Display:</b>	64 x 160 pixel graphic display
<b>Data entry:</b>	14-key keyboard
<b>Power supply:</b>	(2) AA batteries
<b>Battery service life:</b>	400 tests approx.
<b>Data memory:</b>	700 tests approx.

<b>Print out:</b>	direct to printer or via PC, plain paper A4
<b>Data communication:</b>	direct: printer, modem-telephone, e-mail. With EasyWare to PC and beyond
<b>Languages:</b>	English, German, French, Italian, Spanish, Portuguese, Polish, Japanese, Norwegian, Finnish, Danish, Greek, Swedish, Dutch. Other languages on demand
<b>Predicted values:</b>	ERS (ECCS), Roca, Austria, NHANES III, Knudson 1976, Knudson 1983, Crapo, Morris, Cherniak, Berglund, Gulsvik, Hedenstroem, Asia 1-4, JRS2001, Gore, Pereira, Finnish. Paediatrics: Zapletal, Dockery, Hsu, Hibbert

### ndd advantage: (nnd true flow)

- no sensor in contact with sample
- no influence of humidity, barometric pressure, contamination
- no calibration
- no cleaning, no maintenance
- simple and economic consumables
- easy to operate outside lab with operator prompts and diagnostics
- extremely high accuracy for low flows
- no down time

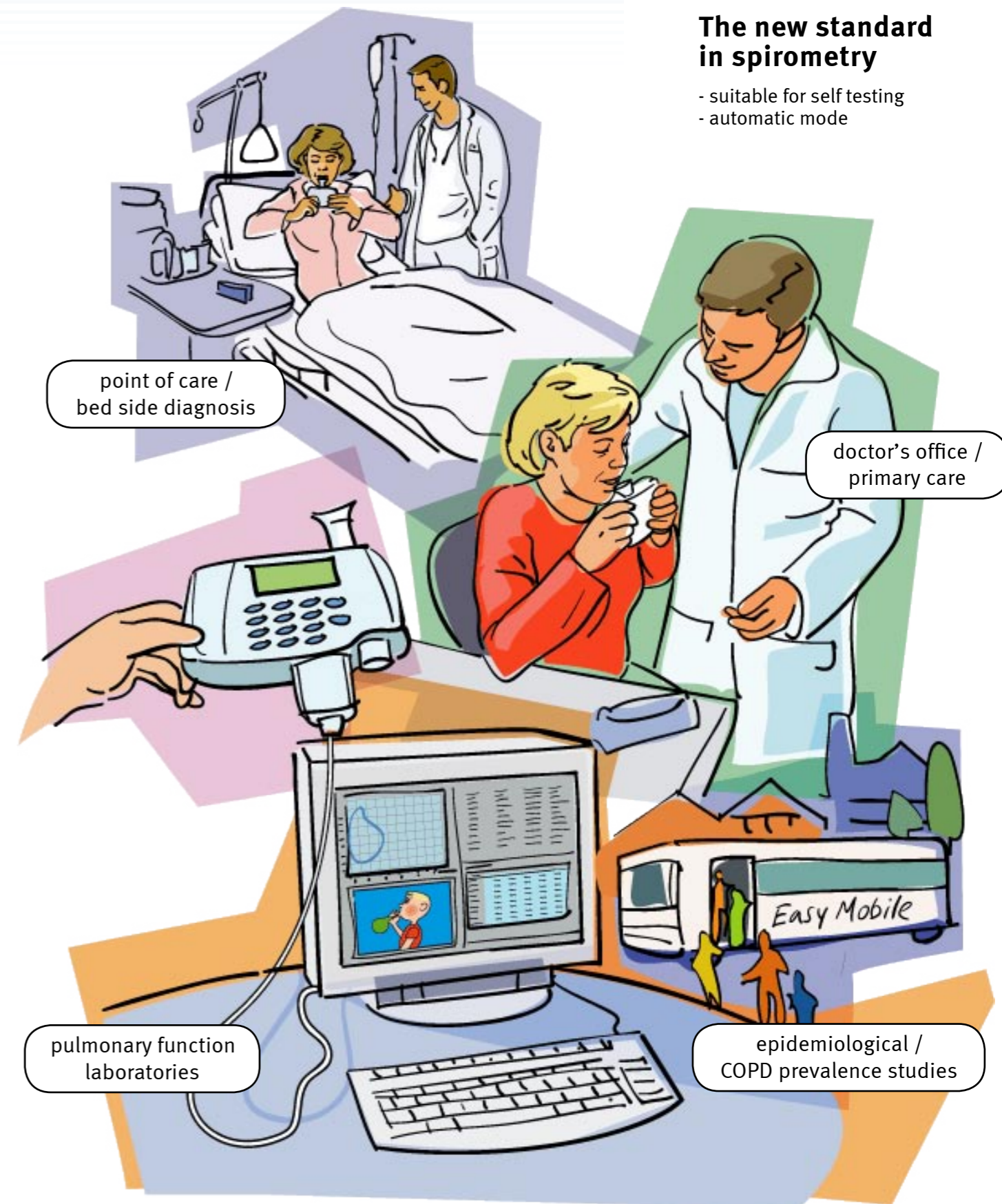
### all competitors:

- (turbine, Fleisch, pneumotach, heated wire)
- sensor always in contact with sample
  - extremely sensitive to contamination (measuring errors)
  - regular calibration needed
  - need for cleaning
  - need for filters
  - difficult to operate outside labs
  - limited low flow detection
  - down time for maintenance

n d d  
**EasyOne**

**The new standard  
in spirometry**

- suitable for self testing
- automatic mode



n d d

nnd Medizintechnik AG  
Technoparkstrasse 1  
CH-8005 Zurich, Switzerland  
[www.ndd.ch](http://www.ndd.ch)



**The ndd true flow technology**

- sensor is never in contact with the sample
- ndd true flow is absolute flow (no influence by contamination, humidity, droplets, temperature)
- ndd true flow is also used by major OEM manufacturers (Ventilators, Anesthesia, Spirometers etc.)

**Lowest running costs**

- different consumable options; single use and reusable spirettes to match the user's priority
- no costly calibration nor any other maintenance
- no down time

**The display**

- 5 lines with ample space for clear communication
- used for guidance to achieve high grade tests
- gives instant results and diagnosis



**spirette™**

- the best docking for adults and children
- hygienic single patient consumable for full contamination control



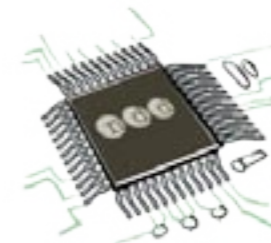
**Endorsed, worldwide proven**

- by NASA, MIR space programs in use for crew monitoring in outer space
- ATS, ERS, CSA, JAPAN, FDA, CE, NIOSH, OSHA, GOLD, BOLD, Platino
- drug makers for clinical and marketing studies
- major Asthma / COPD drug companies
- top references in USA, EU, Japan, Asia, Australasia, Latin America

CE  
0120

**Keypad**

- alpha numeric
- data entry like cell phone



**Vast memory**

- up to 700 patients (first in first out)
- secured memory, no accidental loss when battery low
- multiple units may be used with one cradle and one **EasyWare™** PC software



**Cradle (base station)**

- for standby positioning of the **EasyOne™**
- for communication from the **EasyOne™**:
  - directly to printer, serial or USB
  - to PC (by the **EasyWare™** software)
  - to modem / telephone (studies, home use etc.)
  - direct encrypted e-mail transmission



**Report**

- plain paper A4 or letter size
- in colors with clear and lasting print
- ready to be filed and stored
- direct USB connection to printer
- export to 'word', 'excel' etc.



Actual size



**EasyOne Screen™**

- for connection of the **EasyOne Screen™** to a PC
- direct real time FV and FT curve
- reject / accept feature
- children incentive screen



**Battery powered**

- 2 AA standard batteries last for approximately 400 tests
- no need for re-charging, no down time
- works everywhere, any time