

P5

Digital
Ultrasonic
Diagnostic
Imaging
System



P5



Created to be a high value B/W cart-based system. The 15" LCD monitor with articulated arm and high configuration make P5 outstanding in the B/W ultrasound market. Standard three sockets are freely available for fifteen transducer choices, supporting a wide range of clinical applications.



Features

Excellent Ergonomic Design:

- The high resolution 15" LCD monitor with an articulated arm
- Ultra large 160mm x 160mm imaging area provides more comfortable viewing experience and more accurate diagnosis for various applications.
- Slim and mobile cart-design ensures A8 fit into tight space and bedside

Powerful Documentation Abilities:

- PC compatible PDF report function lets the diagnostic findings more concise for sonographers while the diagnostic report are clearer for patients.
- Full patient database solutions: hard disk, DVD, 4 USB2.0 ports, DICOM3.0 and AVI/JPG format.
- Fifteen available transducer choices support a wide range of applications: General, Radiology, OB/GYN, Urology, Pediatric, Musculoskeletal, etc.

Ease and Efficiency of Exams:

- M-tuning optimizes the image quality at the touch of one button. This function significantly reduces operating time and improves the consistency and accuracy of diagnosis.
- Clipboard function for quick patient image capturing and reviewing enables users to retrieve and read previous images immediately on the screen.
- Digital measurement hotkeys endowed with user-definable formulae offer efficient quick one-key reproduction measurements.
- 180° transvaginal transducer makes no more tough work both for doctors and patients in the endo-cavity

Technical Specifications

Application:	Abdominal, Gynecological, Obstetrical, Cardiology, Urological, Vascular, Small Parts
Sweep method:	Electronic Convex Sector, Electronic Linear, Biplane Probe
Sweep Range:	Convex Array: Depth > 300mm Linear Array: Depth 120mm, Width 65mm Micro-Convex Array: Max angle 180°, Max Depth 320mm (Depend on Probe)
Image Modes:	B-Mode, B+M-Mode, M-Mode, 2B-Mode, 4B-Mode, Tissue Harmonic Image
Standard Features:	Frame Rate: 60 frames/sec Gray Scale: 256 levels Scanning Lnes: 256 lines in B mode, 512 lines in M mode Frequency Range: 2.0-12.0MHz Dynamic Range: 158dB
Cine and storage:	Cine: 256 Frames (B-Mode) Display of Number Cine store: ≥10000 images in JPG format ≥2000 images in bmp format Measureable when recall images
File Management:	File output format: Image: BMP, JPG, AVI;DCM Report: RPT, PDF Storage media: USB Flash Drive
Probe Connectors:	Active Connectors: 2 connectors
Display Screen:	15-inch Industrial LCD.
Input/output information:	Input: Foot Switch, 4xUSB2.0 Output: LAN, 4xUSB2.0, composite video, VGA, S-Video, Print Control
Environmental Requirements:	Power in: 110-220V~, 50/60Hz - 150 VA(MAX.)
Weigh:	Approx 50kgs
Dimensions:	≤529mm (L) × 747mm (W) × 1352mm (H)

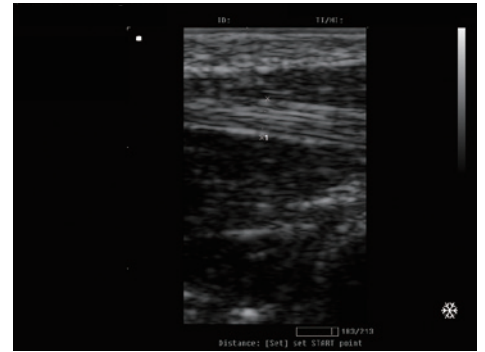
Screen Samples



Fetus



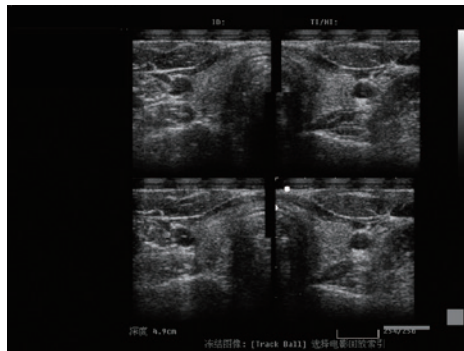
Pancreas



Zoomed Tendon



Uterus



4B Thyroid



MEDISONO,
3511 Silverside RD.
Wilmington, DE 19810
United States
info@medisono.com
www.medisono.com