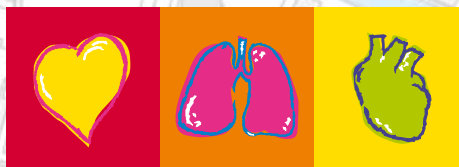




FRED easy Online



SCHILLER

The Art of Diagnostics

FRED easy Online

Full Control of the survival chain

Around the world, all public places, schools, companies, airports, stadiums, shopping centres and also hospitals, first aid services and firefighters equip themselves with Automated External Defibrillators (AED) to guarantee security and first aid for everyone.

With its new concept of networked AED, SCHILLER advises a unique solution for a better reactivity in case of cardiac arrest and a simplified management of the defibrillator pool. FRED® easy Online is an AED which is permanently connected to the network (by an Ethernet cable or wireless).

Permanent control of the defibrillator pool:

- Presence of the device
- Functioning
- Configuration

Simplified pool management:

- Remote device configuration and software update by authorised users.

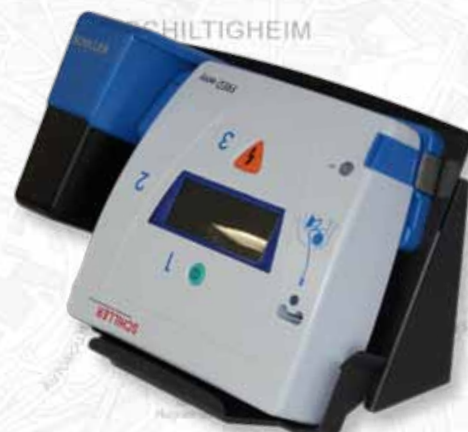
Information system:

Notice can be sent by text message and/or e-mail when:

- a device is disconnected from its docking station
- a technical problem is detected
- a reminder is sent on the due date

Schiller FRED easy or FRED easy Life devices are available with network capability.

The SCHILLER networked AEDs are available in semi-automatic or fully automatic version.



FRED easy in Smart Station



FRED easy Life in Smart Station

LifeDataBox server

Easy, fast and safe data transfer

No special installation and no IT knowledge is necessary to connect the defibrillator, a standard network connection is enough.

Data centralisation and simplified data management

This system simplifies the medical and administrative handling of the patient data (no more paper documents or memory cards). All technical data concerning the devices as well as the patient data recorded during intervention are automatically transferred in a safe way to the server and stored in a single location.

Remote data access

Multi-user access to review the patient data from any computer via web browser.



LifeDataBox


Mobile solution

Simple data transfer

Data recorded in the field can be transmitted in an easy, fast and safe way once back from the intervention. This system considerably simplifies the handling of medical and administrative patient data (no paper, no memory card).

FRED easy with network capability can be used without docking station, in situations where the device cannot be permanently connected to the network, for example when it is in a vehicle.

The device is only connected to the network to transfer the data recorded during the intervention and the device configuration. This information is transmitted to a server in order to centralise all data and gives easy access to this data.



FRED easy with Ethernet adapter



FRED easy with bag in Smart Station



Network connection

Networked AEDs are suitable for all locations thanks to adapted connection:

- **Ethernet adapter:** for simple data transfer to the server
- **Basic station:** cable or wireless connection
For data transfer and permanent device monitoring and communication with the server
- **Smart station:** cable connection
For data transfer and permanent device monitoring and communication with the server
+ Additional advanced network capabilities

FRED easy Online Smart Station

Thanks to the Smart Station, you can use Internet to connect your FRED easy Online.

With SCHILLER's new concept of networking AEDs there is a unique solution available to solve networking issues in a customised and safe way.

- **Easy connection through Internet**

The Smart Station integrates a Virtual Private Network (VPN) function which guarantees a direct and safe connection between the FRED easy Online and the LifeDataBox. The Smart Station simplifies FRED easy Online installations when using the Internet network.

No additional VPN equipments are required. The connection of FRED easy Online as well as the network configuration becomes as easy as ABC.

By using the Smart Station via Internet, the data and communication between FRED easy Online and the LifeDataBox is as safe as it is in a local network.

- **Distinction between a disconnected device and a network disconnection**

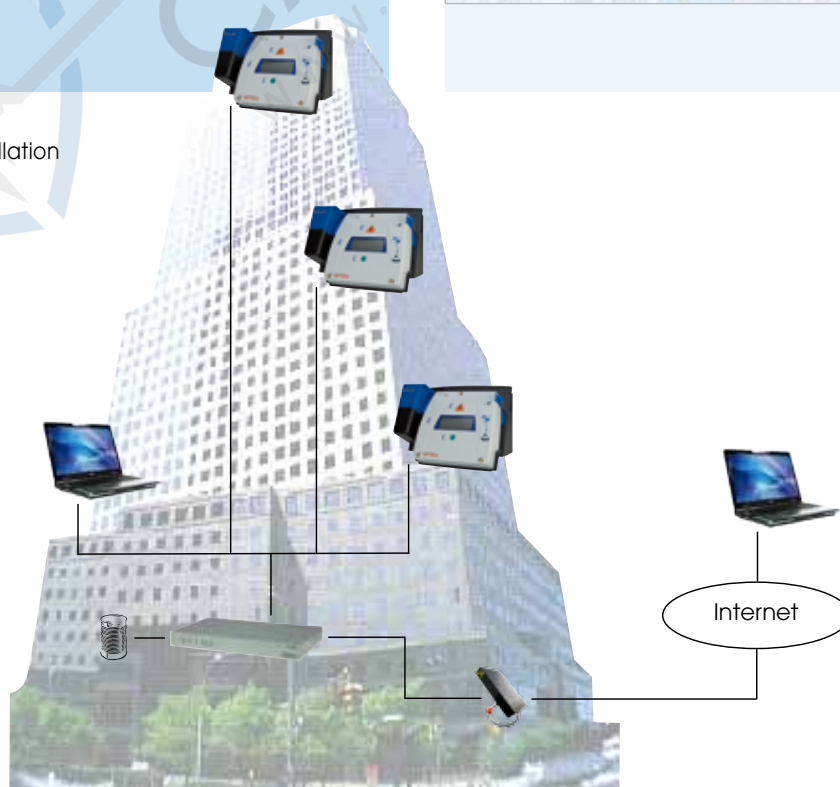
The system will distinguish between a device which is no longer monitored because of a network disconnection, and a device which is offline, i.e. used for an intervention.

- **External power supply**

When FRED easy is placed in the docking station, its battery is not used.



Example for local network installation



LifeDataNet Serenity

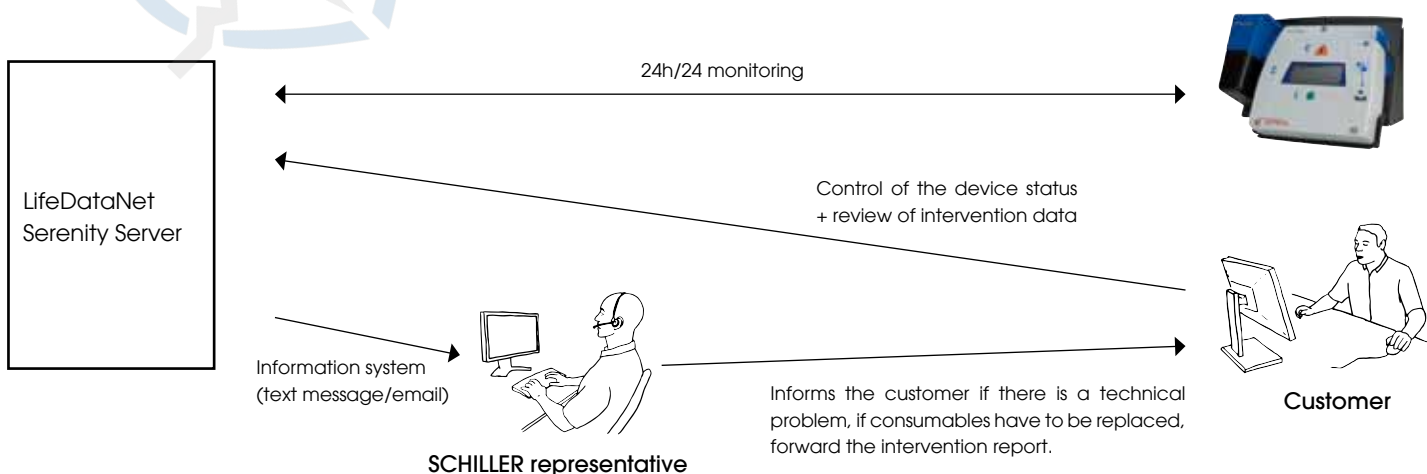
We take care of your defibrillators so you can get peace of mind

All the devices in your company, hospital, offices, city, country or worldwide are connected to the Schiller LifeDataNet Serenity server via Internet.

You don't need to concern yourself with the defibrillators, each one of them is permanently under full control and you will be informed about the following:

- Monitoring of the use-by-date of the defibrillation electrodes → automatic supply of electrodes
- Monitoring of the battery level → automatic supply of the battery
- Quick intervention of a technician in case of a technical problem → your device is always ready for use
- Devices are always up to date → your device is always up to date with the latest patient safety technology
- Intervention data is saved and centralised → you receive a PDF report of each intervention and you can review patient data from anywhere at any time
- The server availability and the data base backup is guaranteed → your data is securely stored
- Remote access to your defibrillator pool → you can check your defibrillator pool at any time and from anywhere

A complete service to maintain your defibrillator is offered for service fee.



Universal access and easy management of networked defibrillators.

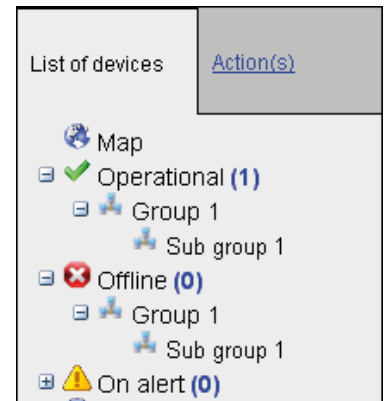
LifeDataNet is a web interface which allows you to connect with your web browser to the server from any computer connected to the network without having to install any special software.

With LifeDataNet, you can manage your FRED easy Online pool.

Simplified pool management

Provides you with a global overview of your FRED easy Online pool. Devices can be classified into different customers and groups.

Each customer will only have access to their own devices and interventions.



Thanks to Google Map, you can locate your devices on a map.



Research function

In addition to the tree management, a research function allows you to easily and quickly find the device or the intervention you are looking for.

Reminders

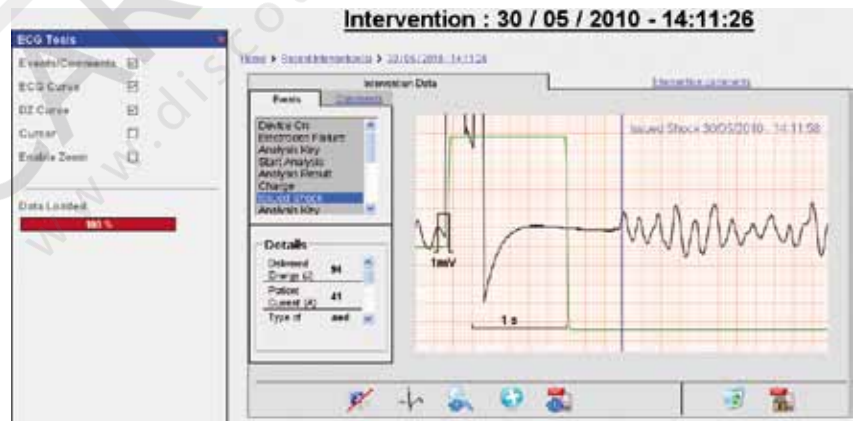
A reminder function allows you to define warning deadlines such as the expiration date of the electrodes, preventive maintenance...

Central data storage

All technical data concerning the device as well as the patient data recorded during the intervention is automatically transferred in a safe way to the server in order to be stored in a single location.

Intervention data review

Patient data recorded during the intervention can be reviewed directly in LifeDataNet and a PDF report can be edited.



Maintenance

The device can be placed in maintenance mode to change its configuration or for software update. It will also allow a technician to take the device (for example to change the battery) without giving a warning.

Supervision

LifeDataNet gives you a clear view on all events/ actions done on your defibrillators pool.

Information system

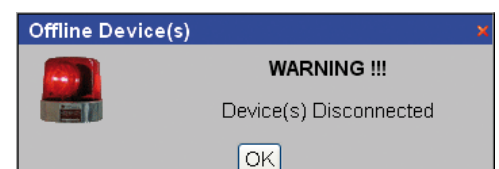
There are several types of information:

- Device on intervention: device is disconnected from its docking station
- Technical notice: low battery, error during the self test...
- Reminder due date

Sound and visual warnings are issued on the computers where LifeDataNet is opened.

Be informed everywhere

Each notice can be transmitted by text message and/or e-mails to several users.





Asia
SCHILLER Asia-Pacific / Malaysia
52200 Kuala Lumpur, Malaysia
Phone +603 6272 3033
Fax +603 6272 2030
sales@schiller.com.my
www.schiller-asia.com



Austria
SCHILLER Handelsgesellschaft m.b.H.
A-4040 Linz
Phone +43 732 709 90
Fax +43 732 757 000
sales@schiller.at
www.schiller.at



China
Alfred Schiller Medical Equipment Co. Ltd.
100015 Beijing, China
Phone +86-010-52007020
diamond@schillermedical.com
www.schiller.cn



France
SCHILLER Médical S.A.S.
F-67162 Wissembourg/Cedex
Phone +33 3 88 63 36 00
Fax +33 3 88 94 12 82
info@schiller.fr
www.schiller-medical.com



France (distribution France)
SCHILLER France S.A.S.
F-77600 Bussy St Georges
Phone +33 1 64 66 50 00
Fax +33 1 64 66 50 10
infoschiller@schiller-france.fr
www.schiller-france.com



Germany
SCHILLER Medizintechnik GmbH
D-85622 Feldkirchen b. München
Phone +49 89 62 99 81-0
Fax +49 89 62 99 81-54
info@schillermed.de
www.schillermed.de



Hungary
SCHILLER Diamed Ltd.
H-1141 Budapest
Phone +36 (1) 383-4780 / 460-9491
Fax +36 (1) 383-4778
sales@schiller.at
www.schiller-hungary.hu



India
SCHILLER Healthcare India Pvt. Ltd.
Mumbai - 400 001, India
Phone +91 22 6152 3333/ 2920 9141
Fax +91 22 2920 9142
sales@schillerindia.com
www.schillerindia.com



Japan
SCHILLER Japan, Ltd.
Hiroshima 734-8551
Phone +81 82 250 2055
Fax +81 82 253 1713
koji.maekawa@schiller.jp
www.schiller.jp



Croatia
Schiller medicinski instrumenti d.o.o.
10000 Zagreb
Phone +385 1 309 66 59
Fax +385 1 309 66 60
info@schillerzg.hr
www.schiller.ch



Latin America
SCHILLER Latin America, Inc.
Doral, Florida 33172
Phone +1 954 673 0358
Fax +1 786 845 06 02
info@schillerla.ch
www.schillerla.ch



Poland
SCHILLER Poland Sp. z o.o.
PL-02-729 Warszawa
Phone +48 22 8432089
Fax +48 22 8432089
schiller@schiller.pl
www.schiller.pl



Russia & C.I.S.
SCHILLER AG Rep. office
125124 Moscow, Russia
Phone +7 (495) 970 11 33
Fax +7 (495) 970 11 33
mail@schiller-ag.com
www.schiller-cis.com



Serbia
SCHILLER d.o.o.
11010 Beograd
Phone +381 11 39 79 508
Fax +381 11 39 79 518
info@schiller.rs
www.schiller.rs



Slovenia
SCHILLER d.o.o.
2310 Slovenska Bistrica
Phone +386 2 843 00 56
Fax +386 2 843 00 57
info@schiller.si
www.schiller.si



Spain
SCHILLER ESPAÑA, S.A.
E-28230-Las Rozas/Madrid
Phone +34 91 713 01 76
Fax +34 91 355 79 33
schiller@schiller.es
www.schiller.es



Switzerland
SCHILLER-Reomed AG
CH-8953 Dietikon
Phone +41 44 744 30 00
Fax +41 44 740 37 10
sales@schiller-reomed.ch
www.schiller-reomed.ch



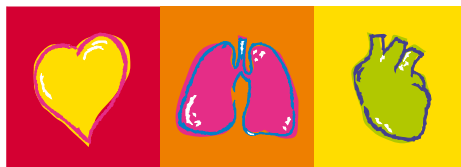
Turkey
SCHILLER TÜRKİYE
Okmeydani-Sisli - Istanbul
Phone +90 212 210 8681 (pbx)
Fax +90 212 210 8684
sales@schiller-turkiye.com
www.schiller-turkiye.com



USA
SCHILLER America Inc.
Doral, Florida 33172
Phone +1 786 845 0620
Fax +1 786 845 06 02
sales@schilleramerica.com
www.schilleramerica.com

04/12

Part no.: 2.500500



SCHILLER

The Art of Diagnostics