



Ultraview SL2700

Spacelabs Healthcare - Connecting Innovation with Care

Spacelabs Healthcare is fully committed to making strong connections: between clinicians and their patients; between technological innovations and real-life patient care; between clinical needs and cost-efficient solutions. We are a dynamic company with decades of experience providing innovative products and services to healthcare professionals.

Our goals are simple:

Keep it easy to use, focus on system flexibility and scalability, and provide access to information anytime, anywhere. The result will continue to fulfill your greatest need: more time to care for your patients.



Flexible Monitoring for Every Care Area

The Ultraview SL™2700 delivers superior monitoring performance in every care unit. Using any arrangement of multiparameter and specialty parameter modules, you can customize the level of monitoring to match your patient's acuity. In addition, your investment in the SL2700 can also support your future IT integration plans.

Advantages

Consistency and flexibility provide superior ease of use and optimal performance in any care environment.

- Intuitive touchscreen menu structure across all Spacelabs products
- Default alarm limits and customizable parameter settings
- Modular, scalable architecture
- Compatible with Ultraview®, Ultraview SL and PCMS™ monitors and modules
- Easily upgraded and/or maintained in the field

Integrated alarm management solutions streamline event notifications and documentation.

- Alarm Limit Review provides a printable summary of alarm limits for all active parameters
- Flexport® system interfaces link alarms from standalone devices
- Tone Access controls
- Alarm Watch delivers bed-to-bed and bed-to-central alarm notification



Basic configuration delivers a 15" or 19" medical-grade, touchscreen, color LCD displaying 4, 6 or 8* waveforms and up to 24 parameters

** Availability of waveform options may vary by area.*

Superior network solutions deliver instant access to patient information.

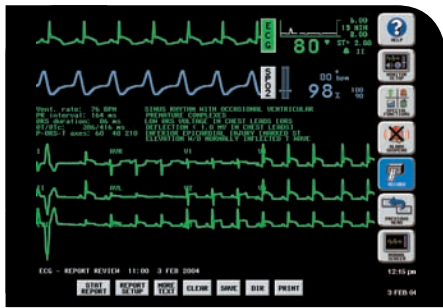
- Remotely view, control, review and record patient data for any other networked or telemetry bed without leaving the patient
- Configurable patient ID
- Full Bed Review

Information management solutions help build a concise patient record.

- Barcode scanner support
- Flexport system interfaces
- Data Shuttle® option provides a seamless transfer of patient data between monitors, ensuring that information always stays with the patient
- HL7 interfaces to HIS applications

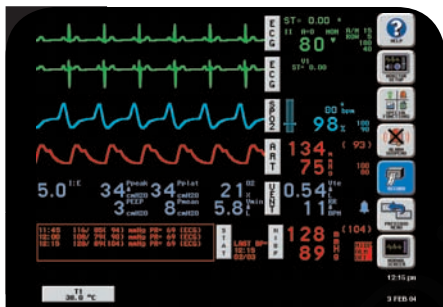


Ultraview SL2700



Advanced cardiac monitoring without additional equipment

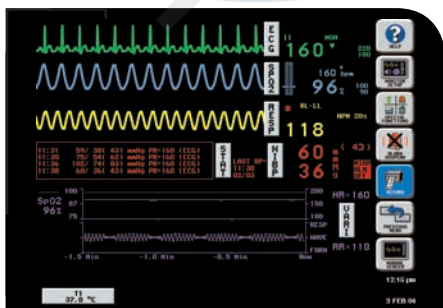
- Continuous 12-lead ST segment monitoring
- Dual-lead arrhythmia analysis and trending
- Diagnostic-quality, 12-lead ECG reports with optional interpretation package



Flexport system interfaces extend the reach of patient care to standalone devices

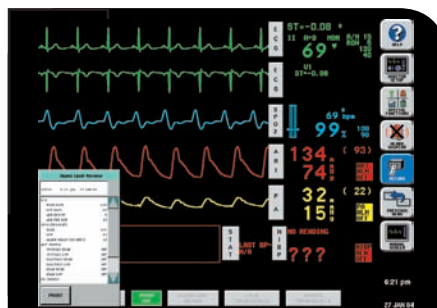
- Consolidate waveforms, data and alarms at the bedside and central
- Integrate information directly into the monitor trends for output to HIS and CIS applications
- Provide view, control, review and recording of patient information across the network

A variety of mounting solutions provided by GCX Corporation makes it easy to use the SL2700 in different care areas.



Varitrend® 3 OCRG for neonatal event review








- Combines HR, SpO₂ and respiration trends into a single graph
- User-definable events for quick assessment of clinical changes



Alarm Limit Review

- View or print all current alarm settings

Parameter Module Solutions

Ultraview SL Command Module							SpO ₂	Options – SL Command Module:
Parameter Set	ECG	NIBP	TEMP	IP	CO			
 91496-A Noninvasive Set	✓	✓	2	–	–	Comprehensive SpO ₂ Options	<ul style="list-style-type: none"> • Three levels of arrhythmia: <ul style="list-style-type: none"> – Basic – Standard Multiview™ (MVI) – Advanced Multiview (MVII) • Diagnostic 12-lead ECG <ul style="list-style-type: none"> – With measurement & interpretation – Without measurement & interpretation • ST segment analysis • MasimoSET, Spacelabs or Nellcor OxiMax SpO₂ • Respiration • Varitrend® 3 OCRG 	
 91496-B Invasive Set	✓	✓	2	2	–			
 91496-C Invasive Set with CO	✓	✓	2	4	✓			
 91496-I Noninvasive Set without ECG	–	✓	2	–	–			

Network

The Spacelabs monitoring network supports seamless data acquisition and exchange across the enterprise, addressing the clinician's need for continuous information management.

Available accessories include:

- Flexport interfaces to standalone devices
- Remote keypad
- External nurse alarm light
- GCX mounting and mobility solutions

Options

- Perioperative Software
- Data Shuttle
- Drug Dose Calculations
- Vital Sign Calculations
- Full Bed Review (FBR)
- Full View ECG Display
- Patient Data Logger™ (PDL)

Supplies and Accessories

High-quality supplies and accessories are important for monitoring system performance and for economical and efficient patient care. All Spacelabs supplies and accessories are carefully designed and tested to guarantee optimal system performance.