

# Panorama® TELEPACK-608

## Features and Benefits

### Telepack

- Operates in the protected WMTS frequency band
- Nurse Call and Attendant Present buttons improve communication between clinician and patient
- Remote print button allows clinician at bedside to remotely capture event data
- ECG lead quality indicators provide visual feedback on quality of patient preparation at the bedside
- Telepack ECG cable is interchangeable with the bedside monitor, simplifying transition between devices
- Water-resistant design protects the device from exposure to moisture and water spray
- Up to 40 hours of continuous operation (ECG only) using (2) AA alkaline batteries

### SpO<sub>2</sub> Module

- Modular, slip-on, design enables targeted SpO<sub>2</sub> monitoring when and where it's needed
- Continuous SpO<sub>2</sub> acquisition, versus interval or spot check measurements
- Low power design provides up to 24 hours of continuous operation with Telepack (ECG and SpO<sub>2</sub>)

Available with optional SpO<sub>2</sub> monitoring module.



Optional SpO<sub>2</sub> module



Mobile patients in any department can be reliably monitored for both ECG and SpO<sub>2</sub> with this compact and lightweight ambulatory transmitter and optional SpO<sub>2</sub> module. This multi-function patient monitoring device operates on the same protected wireless medical telemetry network as our wireless bedside monitors. ECG and SpO<sub>2</sub> waveforms and numeric data are transmitted back to the Panorama Central Station for analysis, storage, and review. The modular design saves overall implementation cost by providing targeted SpO<sub>2</sub> monitoring when and where needed.

# Panorama® TELEPACK-608

Small size and ergonomic design enables one handed operation.

ECG lead quality indicators provide visual feedback on electrode site preparation and placement.

Attendant present buttons acknowledge nurse call requests with one hand. (Buttons located on side panel.)

Remote print button initiates a strip report directly from the bedside.

Top loading battery compartment opens easily and allows changing batteries quickly.

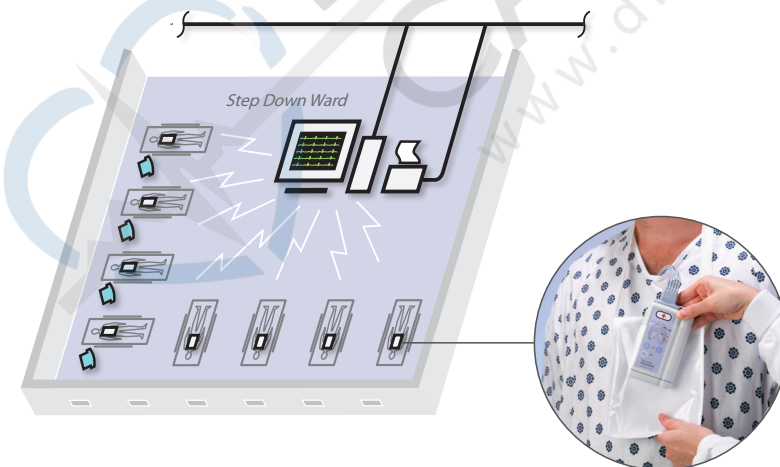
Nurse call button allows the patient to alert nurses at the Central Station.

Device check button enables the user to assess device, battery, and ECG lead status from the bedside.

Removable SpO<sub>2</sub> Module can be easily moved to patients when and where needed.

Durable and comfortable 3 or 5 lead ECG lead set with individually replaceable lead wires.

SpO<sub>2</sub> sensor provides low power operation for maximizing battery life. Compatible with either reusable or disposable sensors.



Mobile step down and progressive care patients can be monitored via the Panorama WMTS ambulatory Telepack-608.

Mindray DS USA, Inc.  
 800 MacArthur Blvd., Mahwah, NJ 07430  
 Tel: 1.800.288.2121 Tel: 201.995.8000 Fax: 1.800.926.4275 [www.na.mindray.com](http://www.na.mindray.com)

©2014 Mindray DS USA, Inc. Mindray™ is a trademark of Shenzhen Mindray Bio-Medical Electronics Co., Ltd. Panorama® is a U.S. registered trademark or trademark of Mindray DS USA, Inc. Subject to change. P/N: 0002-08-7567 Rev E

**mindray™**  
 NORTH AMERICA