

LifeDop

ABI
VASCULAR SYSTEM



User Manual

SummitDoppler
Listening to Life™

Thank you for choosing Summit Doppler Systems. We believe you have purchased the finest handheld Doppler and portable printer on the market. Your total satisfaction is our highest priority as we strive to continually improve our products and services. Please contact us with any suggestions. We look forward to enjoying a long-term relationship with you!

Summit Doppler Systems, Inc.
4680 Table Mountain Dr. #150
Golden, CO 80403

Here's how you can reach us...

Phone: 1-800-554-5090

(303) 423-7572

Fax: (303) 940-7165

e-mail us at: sales@SummitDoppler.com

Visit our website at: www.SummitDoppler.com

Table of Contents:

	Page
Intended use/Contraindications/Warnings.....	3
Description of product (table of features).....	4
Operation and Installation.....	5
Obtaining Doppler Signals.....	8
Printer Operation.....	8
Diagnostic Monitoring	12
Accessories.....	12
Maintenance/Cleaning.....	13
Replacing/Recharging Batteries.....	14
Clinical References.....	16
Specifications.....	17
Trouble shooting.....	18
Warranty.....	19

Please read the manual carefully and become familiar with the operation, features and maintenance of your Doppler prior to using the device or accessories.



Authorized Representative
BellyTalk BV
Benedictijnenstr. 8
1566LB Assendelft
Holland

Manual Part Number: MAN0007 Rev G

Warranty and Servicing Policy

Summit Doppler Systems, Inc. is pleased to present our customers with a 30-day no hassle evaluation return policy in the event that you are not satisfied with our product.

The warranty on this product is that it will be free from defects in material and workmanship for 12 months from the original sale of the device. This includes all parts and labor required to repair or replace the unit to original specifications and shipping costs associated with sending the product back to the customer. Customer is responsible for providing adequate packaging materials and shipping costs to Summit Doppler Systems. Products shall be repaired or replaced in a reasonable amount of time.

Summit Doppler Systems' liability for any claim is limited to materials and labor associated with repair or replacement. In no event shall Summit Doppler Systems be liable for incidental or consequential losses or damages in connection with the purchase of this product.

Summit Doppler Systems disclaims all express or implied warranties, agreements or arrangements other than issued in this warranty unless specified in writing and signed by the President of Summit Doppler Systems.

Summit Doppler Systems is not responsible for damages to the device that occur as a result of the inadequate shipping to Summit Doppler Systems, improper maintenance or cleaning as described in the user manual, misuse, abuse, alteration of the equipment from its original specifications, or dismantling the unit (other than by Summit Doppler Systems approved service technicians).

Service Returns: To return products to Summit Doppler –

1. Call Summit Doppler Systems to obtain a Return Authorization and to receive any final instructions prior to shipping
2. Clean the product prior to shipping
3. Ensure the device is well-packaged and suitable for shipment

Send the product to:

Service Department
Summit Doppler Systems, Inc.
4680 Table Mountain Dr. #150
Golden, CO 80403

For customer service, technical service, cleaning, maintenance or shipping questions please call (303)423-7572 or 1-800-554-5090.

Transducer Model: LifeDop 5 MHz Bi-Dir **Operating Mode:** Continuous-Wave (cw)

Application(s): Peripheral Vascular

ACOUSTIC OUTPUT		MI	I_{SPTA,3} (mW/cm²)	I_{SPPA,3} (W/cm²)	
Global Maximum Value		0.05	500	0.5	
Associated Acoustic Parameter	P _{r,3} (Mpa)	0.12			
	w _o (mW)		32.7	0.32.7	
	f _o (MHz)	5.50	5.50	5.50	
	z _{sp} (cm)	0.85	0.85	0.85	
	Beam Dimensions	x ₆ (cm)		0.4	0.4
		y ₆ (cm)		0.6	0.6
	EBD	Az (cm)		0.4	
Ele. (cm)			0.8		

Transducer Model: LifeDop 8 MHz Bi-Dir **Operating Mode:** Continuous-Wave (cw)

Application(s): Peripheral Vascular

ACOUSTIC OUTPUT		MI	I_{SPTA,3} (mW/cm²)	I_{SPPA,3} (W/cm²)	
Global Maximum Value		0.04	365	0.37	
Associated Acoustic Parameter	P _{r,3} (Mpa)	0.116			
	w _o (mW)		15.7	15.7	
	f _o (MHz)	8.43	8.43	8.43	
	z _{sp} (cm)	0.63	0.63	0.63	
	Beam Dimensions	x ₆ (cm)		0.42	0.42
		y ₆ (cm)		0.14	0.14
	EBD	Az (cm)		0.6	
Ele. (cm)			0.3		

I_{SPTA,3} the **derated spatial-peak temporal-average intensity** (mwatts per cm²).
 I_{SPPA,3} the **derated spatial-peak pulse-average intensity** (watts per cm²).
 MI the **Mechanical Index**.
 P_{r,3} the **peak rarefactional pressure** (megapascals) associated with the transmit pattern giving rise to the value reported for MI.
 W_o the total time-average **ultrasonic power** (mwatts).
 f_c the probe **center frequency** (MHz).
 z_{sp} the axial distance at which the reported parameter is measured (cm).
 x₆, y₆ are the **-6dB beam dim.** in the x-y plane where z_{sp} is found (cm).
 EBD the **entrance beam dimensions** (cm). These dimensions are the same as the dimensions of the transmit crystal.

Measurement Uncertainties:

Power:	+34, -42%
Pressure:	+11, -16%
Intensity (I _{spta}):	+23, -26%
Frequency:	+/- 5%

Acoustic Output Parameters are measured in water. Derated values, denoted by the subscript “.3”, take into account a conservative level of attenuation that would be encountered in the human body. The derated intensity values (I₃) are obtained from water values of intensity (I_w) at a depth of z calculated by:

$$I_{3} = \exp(-0.23*0.3*f*z)*I_{w}$$

(where f is the probe frequency in MHz and z is the depth in centimeters)

The derated peak rarefactional pressure is calculated from the value of measure water (pr) by:

$$P_{r,3} = \exp(-0.115*0.3*f*z)*p_r$$

(where pressure is given in megapascals)

Additional Output Reporting Information for IEC 61157

8 MHz: I_{ob} < 112 mW/cm²

Note that parameter Z_{sp} in the probe reporting tables is the same parameter as I_p in IEC 61157.

Operating Conditions: There are no user controls which affect the ultrasound output.

Summit Doppler Systems, Inc. provides general reimbursement information related to the diagnosis of peripheral arterial disease as an overview for our customers. It is important to understand that reimbursement is a complex process and requirements are subject to change without notice. It is the responsibility of the healthcare provider to determine and submit appropriate codes, charges, and modifiers for services that are rendered. Prior to filing any claims, customers are advised to contact their third-party payers for specific coverage, coding and payment information. **Summit Doppler Systems, Inc. makes no promise or guarantee of reimbursement by Medicare or any other third-party payer.**

Intended Use

This product will be used to detect blood flow in veins and arteries for assisting in the detection of peripheral vascular disease.

Federal law restricts this device to sale by or on the order of a licensed practitioner.

Contraindications

Warning: The vascular probes are not for fetal use.

Warning: The ultrasound probes are not to be used on or near the eyes.

Warning: The device is for use only on intact skin.

Warning: Do not plug any part of this device into a telephone or modem.

Warning: This device is not intended for use with HF surgical equipment.

If there are questions or concerns regarding these warnings or contraindications, please do not hesitate to contact Summit Doppler Systems for further clarification.



In order to preserve, protect and improve the quality of the environment, protect human health and utilize natural resources prudently and rationally – do not dispose of waste electrical or electronic equipment (WEEE) as unsorted municipal waste. Contact local WEEE disposal sites or Summit Doppler Systems to dispose of equipment.

Safety of Ultrasound

The Summit Doppler was designed with physician and patient safety in mind. In early design phases all potential hazards were eliminated or reduced to As Low As Reasonably Achievable (ALARA) by adhering to good design practices and industry wide safety standards. Ultrasound procedures should be performed with the ALARA principle in mind when delivering ultrasound energy into the body.

The following official statements from the American Institute of Ultrasound Medicine (AIUM) are provided for your general information regarding the safe use of ultrasound.

Clinical Safety

Approved March 1997, October 1982

Diagnostic ultrasound has been in use since the late 1950s. Given its known benefits and recognized efficacy for medical diagnosis, including use during human pregnancy, the American Institute of Ultrasound in Medicine herein addresses the clinical safety of such use:

There are no confirmed biological effects on patients or instrument operators caused by exposures from present diagnostic ultrasound instruments. Although the possibility exists that such biological effects may be identified in the future, current data indicate that the benefits to patients of the prudent use of diagnostic ultrasound outweigh the risks, if any, that may be present.

Prudent Use

Approved May 1999

The AIUM advocates the responsible use of diagnostic ultrasound. The AIUM strongly discourages the non-medical use of ultrasound for psychosocial or entertainment purposes. The use of either two-dimensional (2D) or three-dimensional (3D) ultrasound to only view the fetus, obtain a picture of the fetus or determine the fetal gender without a medical indication is inappropriate and contrary to responsible medical practice. Although there are no confirmed biological effects on patients caused by exposures from present diagnostic ultrasound instruments, the possibility exists that such biological effects may be identified in the future. Thus ultrasound should be used in a prudent manner to provide medical benefit to the patient.

Safety in Training and Research

Approved March 1997, March 1983

Diagnostic ultrasound has been in use since the late 1950s. There are no confirmed adverse biological effects on patients resulting from this usage. Although no hazard has been identified that would preclude the prudent and conservative use of diagnostic ultrasound in education and research, experience from normal diagnostic practice may or may not be relevant to extended exposure times and altered exposure conditions. It is therefore considered appropriate to make the following recommendation:

In those special situations in which examinations are to be carried out for purposes other than direct medical benefit to the individual being examined, the subject should be informed of the anticipated exposure conditions, and of how these compare with conditions for normal diagnostic practice.

Specifications

Degree of protection against electric shock:



Type B Applied part



Class II Equipment

Degree of protection against ingress of water:

IPX4 – extending 2.5 cm from tip

IPX1 – entire probe 2.5 cm from tip, excluding connector

Designed and tested to meet:

IEC601-1, IEC60601-1-2, IEC60601-1-4, IEC60601-2-37, EN5011-A

Connect the LifeDop only to equipment that meets the appropriate standards.

	LifeDop	Printer
Dimensions (h w l):	140x70x35 mm	136x84x43 mm
Weight:	320 grams	280 grams
Operating temperature:	10 to 40 C	0 to 40 C
Operating humidity:	30 to 75 %	20 to 85 %
Transport/Storage temp:	-20 to 50 C	-20 to 60 C
Transport/Storage humidity:	5 to 90%, non-condensing for both units (beyond 30 days, battery to be stored between -20 and 30 C)	
Battery life	100, 4-minute exams	500 prints
Battery voltage, type	AA Alkaline 1.5V x3	Lithium Ion 3.7V
Audio bandwidth and power:	245 Hz – 4 KHz, 0.33 W	
Audio cable pin out:	3.5 mm stereo plug Tip - toward, Ring - away, Shaft – common Note: Common is not a ground connection	
Printer Paper Type/Size (max):	Thermal, 58mm wide, 33mm diameter	
Printer Speed:	35mm/sec, 8 seconds for standard printout	
Printer Resolution:	48mm wide, 8 dots/mm, 384 dots/line	
Printer Impact Resistance:	1.5 meter on linoleum floor	
Printer Communication:	RS232, 8 data bits, 1 stop bit, no parity, 115.2Kbaud	
Printer Recharger:	Input – 100-120VAC, 29VA, 50/60Hz Output – 5VDC, 2.3A, center positive	
Waveform Frequency Scale	Auto scaled to max 4KHz, 2KHz and 1KHz	
Waveform Time Scale	25mm/sec, 100 mm length w/ 4 sec of data	
Printout Length	175 mm total with header	



Attention: Consult Accompanying Documents

Additional technical information is available upon customer request.

Printer Not Printing (Error 9)

The LifeDop and printer have lost communication. This may be due to a printer jam, paper empty, low printer battery or any of the above printer error codes. To clear the error, lift the paper cover lever, reseal the paper roll and close the cover. If printer communication is re-established, the LifeDop will automatically print the buffered waveform. If Error 9 persists, turn off both printer and LifeDop and re-start waveform buffer.

Waveform appears to be the same above and below the base line

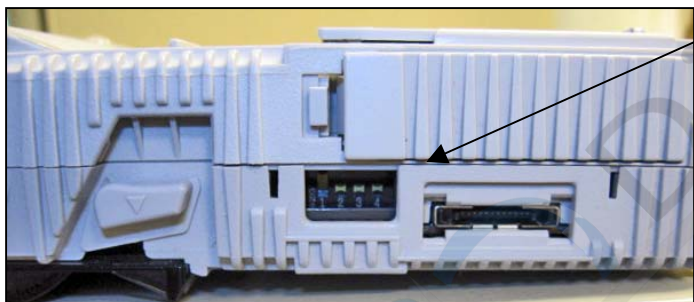
This anomaly normally occurs when the probe is close to perpendicular to the vessel. Reacquire the Doppler signal with the probe angle at 45 degrees as described in Obtaining Doppler Signals.

Faint signal is audible, but waveform is not obtained on printout

The LifeDop main unit is designed to reject noise and certain artifacts. Even a valid signal must reach a threshold before it can be printed; therefore it is normal for some very weak signals to be rejected.

Printer Switches not set in proper location

The printer switches have been preset at the factory to the proper location, however if they have been changed the printer will not function. Orient the printer and set the DIP switches to match the following:



- 1 – Up
- 2 – Down
- 3 – Down
- 4 – Down

Reference materials for Peripheral Vascular testing:

Noninvasive Diag of Peripheral Vascular Disease; W. Robert Felix, Jr., 1988

Current Noninvasive Vascular Diagnosis; Ali F. Aburahma, Edward B. Diethrich, 1988

Vascular Disease Foundation; www.vdf.org

American Heart Association; www.americanheart.org

American Diabetes Association; www.diabetes.org

Description of product

The Summit LifeDop ABI is factory configured to include many features and product enhancements. Along with interchangeable ultrasound transducers, the Summit Doppler device is well suited to meet your specific needs.

Main Unit

The main handheld unit is ergonomically designed to fit the palm of your hand with comfort and allow easy access to each control feature. Each unit is individually tested and inspected to ensure the highest quality standards.

Printer Download – The LifeDop buffers 4 seconds of waveform data and waits until the printer is ready to print out a record of the examination.

LCD Display – The LCD display allows you to view information in large easy to read digits including probe ID, battery life, signal strength indicators, and multiple diagnostic indicators that ensure your unit is functioning at peak performance levels.

SSQ – Superior Sound Quality. LifeDop ABI is designed with a state of the art sound system that produces excellent sound quality and long-term reliability.

Main Unit	Feature		
Catalog#	SSO	Display	Download
L250ABI	X	X	X

Probe

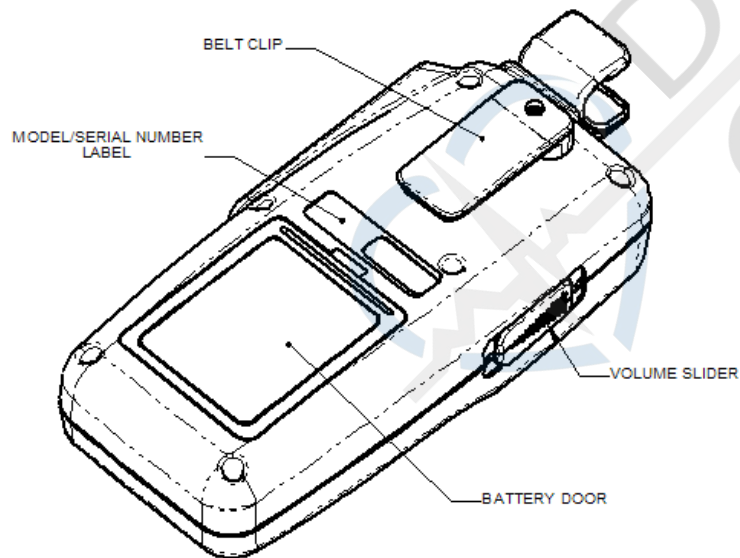
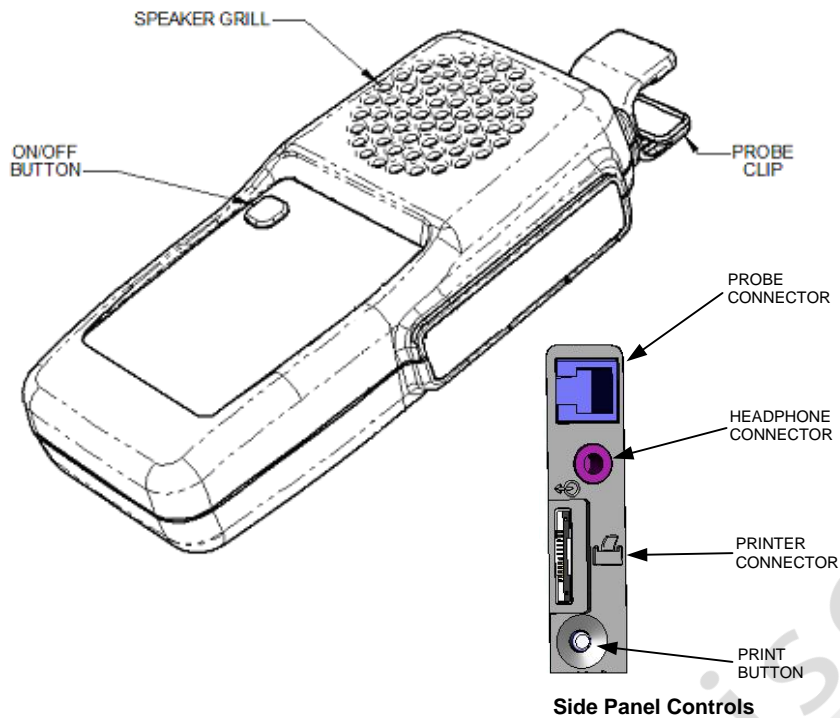
Summit Doppler ultrasound transducers were designed to meet your specific application need. Each probe has been ergonomically designed for comfort while providing excellent maneuverability for locating the vascular target. Every probe is carefully measured and tested to ensure it meets exacting performance standards.

8 MHz Directional Probe – This standard “pencil” style probe is an excellent vascular tool for locating specific shallow vessels in the peripheral vascular system. The narrow grip and small face of the probe make it ideal for maneuvering for maximizing the signal in both flow directions.

5 MHz Directional Probe – This “pencil” style probe, with wide beam and deep penetration, is designed for locating deep vessels in the peripheral vascular system. The narrow grip is easy to maneuver.

Probe	Catalog #		Application	
			PV ABI	PV General
SD8B	8 MHz	Bi-Dir	X	X
SD5B	5 MHz	Bi-Dir	X	X

Operation and Installation



Trouble shooting

Warning: Use alternate equipment in case of unit failure. Call Summit Doppler Systems Service Department if the probe or main unit malfunctions.

Warning: Do not drop or mishandle the LifeDop, probes or accessories. Damage to sensitive electrical components, speakers, cables, transducers or plastic likely to occur.

Poor sound quality

Inadequate gel use

Try and relocate the probe for a better signal

Improper choice of probe Frequency

Interference from other equipment

Probe coiled cable or battery contacts may be intermittent

Debris in the speaker may cause poor sound

Device damage from dropping the LifeDop, probes or accessories

Battery indicator flashing – Error 5 or Error 7

Consult Diagnostic Monitoring, replace batteries as described in Replacing Batteries

Probe frequency does not match the connected probe

Check probe that is attached to ensure it is the correct one, or no probe attached

If correct probe, contact Summit Service

Radio Frequency Interference

The LifeDop was tested for immunity to electromagnetic interference at a level of 3V/meter. Interference during normal operation may occur in the presence of fields stronger than 3V/meter. If this occurs, try to increase the distance between the LifeDop and the source of interference. Contact Summit Doppler for more information.

Printer LED Red or Orange

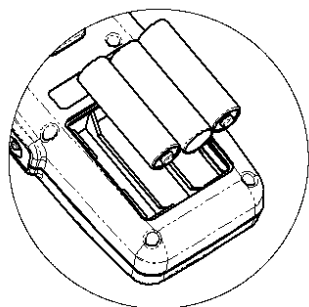
Green LED	Orange LED	Red LED	Error	Solution
Flash 2x			No Error	Normal
		Flash	Low Battery	Recharge
	Flash 1x		Out of Paper	Reload Paper
	Flash 2x		Open Cover	Close Cover
	Flash 3x		Thermal Failure	Call Summit
	Flash 4x		Voltage Failure	Call Summit

Printer DIP switches are preset at the factory. The printer will not function properly if they are moved from these set positions.

Replacing LifeDop Batteries

Warning: Replace batteries only with batteries supplied by Summit Doppler Systems. The battery compartment only accepts AA size batteries. See accessories list for part number and re-order information.

Open the battery compartment by depressing the tab and pulling outward on the battery door. Remove the existing drained batteries by pushing on the end of the battery that compresses the battery contact spring and lift upwards. It is acceptable to use a small tool or pen to assist in this step.



Replace the batteries by paying close attention to the polarity indicators on the battery and the polarity indicators on the battery holder in the compartment. Positive (+) aligns with positive (button) and negative (-) aligns with negative (spring). Insert the battery such that the spring contacts are loaded first and then press the battery firmly into place.

Warning: If the batteries have been inserted incorrectly, the unit will not function but the LifeDop will not be damaged.

Recharging Printer Batteries

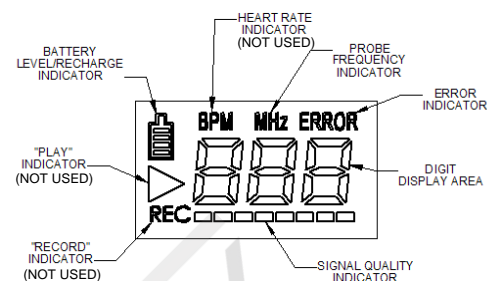
Warning: Use only the battery and AC adapter supplied with the printer. Use of any other battery and/or AC adapter is hazardous and may cause damage to the equipment.

Warning: Do not connect the printer to the Doppler while the printer is charging.

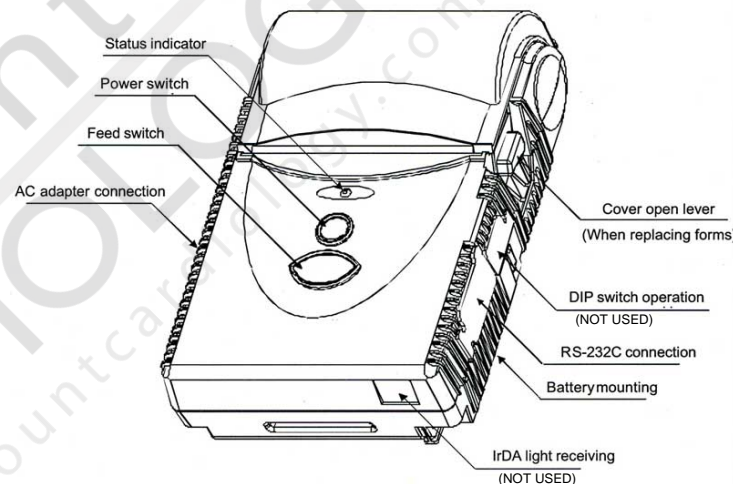


Printer Recharger

Turn the printer off. Lift the rubber flap on the left side of the printer and plug in the connector of the recharge adaptor. Make sure recharger is plugged into a standard 120VAC outlet. When properly connected, the LED will be red. Upon completion of charging the LED will be green. Remove the recharger and replace the rubber flap



LCD Display



A comprehensive In-Service Training Video is now available.

Turning Unit On/Off

Turn the LifeDop on by pressing the On/Off button. LCD indicators show power status. The LifeDop automatically shuts itself off after 5 minutes if it is not being used.

Turn the Printer on by pressing and holding the On/Off button until the green LED comes on (approximately 3 seconds). Printer automatically shuts itself off after 30 minutes.

Volume Slider

The audio level can be adjusted using the Volume Slider. Moving the slider up will increase the volume, while moving it down will decrease it. The volume slider does not affect the headphone output.

Obtaining Doppler Signals and Printer Operation

Caution: Doppler examinations should be performed only by trained individuals.

For any Doppler examination, it is essential that an adequate supply of coupling gel be used to transmit the ultrasound energy from the probe to the surface of the skin. Re-apply more gel if it starts to dry out or spread so thinly that an air gap occurs between the probe and the skin. It is not necessary to cover the entire surface of the probe, only the probe face. Applying too much gel makes the unit difficult to clean and does not aid in the performance of the probe.

For the best results, angle the probe approximately 45 degrees from the skin surface over the general location of the vessel. Slowly move the probe side to side and vary the angle of the probe until the vascular sounds are heard. Changing the angle of the probe has an affect on the frequency of the sound. The steeper the probe angle, the higher the frequency of the sound.



Signal Quality Indicator

Once flow sounds are found, the signal strength indicators give the user a visual display of the flow direction and relative strength of the signal. Four bars of the left indicate flow toward the probe, while the four bars to the right indicate flow away from the probe. Vary the probe position and angle as described above while viewing the indicators to obtain the best results.

Buffering a Waveform

Once the desired flow is found, press the red "PRINT" button on the side of the unit to buffer the PREVIOUS four seconds of flow. When the waveform is buffered, as indicated by "STR" on the display, the probe is temporarily shut off and can be removed from the patient. The printer need not be connected to buffer the waveform - the LifeDop waits until the printer is ready.

Note: Only one waveform can be buffered at a time and the LifeDop must remain ON in order to retain the waveform.

Maintenance and Cleaning

Warning: The LifeDop is not designed for liquid immersion. Do not soak or drop the Doppler main unit or probes in liquids. Use only spray or wipe cleaners and disinfectants.

Warning: The LifeDop is not designed for sterilization processes such as autoclaving or gamma radiation.

Warning: The LifeDop is not intended to be used on open skin. If there is evidence of open wound contamination, disinfect the probe before using again as described below.

The LifeDop Doppler requires very little maintenance. However, it is important to continuing function of the unit and the health of the patients that the unit is cleaned and examined regularly per the following guideline:

After every examination:

Excess gel should be wiped off prior to docking the probe. Probes and main unit should be cleaned with a damp warm water cloth or presaturated isopropyl alcohol wipes or spray such as Transeptic® from Parker Laboratories, Inc. In particular, pay close attention to clean the seams along the plastic lines at the probe face but do not allow water or spray to enter through the connectors or speaker grill.

To disinfect unit, use commercially available spray or wipe disinfectants registered with the EPA – such as Precise® QTB from Caltech Industries, Inc. Follow the manufacturers instructions and wipe unit until it is dry of solutions. Examiners should wash hands and change gloves after every exam. Refer to local and hospital policies for cleaning and disinfection policies.

Store unit in a clean area free from dust and debris. Follow temperature and humidity guidelines as specified at the end of this manual.

Warning: If the unit is to be stored for longer than 90 days without use, remove the batteries prior to storage.

Periodically (at least annually):

Inspect the main unit and probes for signs of cracks or breaks in the mechanical housing. Inspect cables and connectors for signs of wear or failure. The user should discontinue use of the unit with any sign of loss of housing integrity. Contact Summit Doppler Systems for service.

It is recommended that rechargeable batteries be replaced annually.

Diagnostic Monitoring

All LifeDop Doppler units perform continuous diagnostic monitoring and give a visual indication of battery level. The LifeDop uses a multiple level battery shaped icon that indicates the voltage level of the battery. The battery outline will flash when the battery level is very low indicating that the user should change the batteries soon after the current examination is complete.

Once the unit is on, the LifeDop performs a series of diagnostic checks. The unit first checks and displays the frequency of the probe that is being used. This display will not change unless the probe is changed or the power is cycled, in which case the display will again temporarily confirm the frequency of probe that is connected.

The unit then checks for proper internal operating temperature, battery voltage, reference voltage and power supply voltage levels. If any of these characteristics are out of range, the display will show the ERROR icon and a failure code associated with the diagnostic error. Diagnostic functions are periodically checked while the unit is on to ensure the Doppler is operating at peak performance. Refer to the table below for failure codes.

Diagnostic Codes – Contact Summit Service

1 – Temperature too low	5 – 5 Volt Supply too low
2 – Temperature too high	6 – 5 Volt Supply too high
3 – Reference Voltage too low	7 – Battery Voltage too low
4 – Reference Voltage too high	8 – Battery Voltage too high
	9 – Printer miscommunication

The printer will perform a self-test print by turning the printer on while the feed button is being held down. A checkered test pattern will print in addition to the printer configuration and loaded fonts.

Accessories

Contact Summit Service at 1-800-554-5090 or (303) 423-7572 to order by phone, or order on-line on our website www.SummitDoppler.com

Description	Part Number	Description	Part Number
Alkaline battery	BAT0002	Coiled Cable	CBL0001
Lithium Ion battery	BAT0004	Printer Cable	CBL0011
Carry Case	PKG0003	Gel (60 gm)	GEL0001
User Manual	MAN0007	Gel (250 gm)	GEL0002
Quick Reference Guide	MAN0008	Printer Paper (Labels)	MMH0014
ABI Assessment Form	MKT0042	Printer Paper (10 yr)	MMH0015
ABI In-Service Video	MKT0076		

Connecting the Printer

Ensure that the printer is loaded with paper and connect the cable to the printer and LifeDop as shown, with connector tabs down as labeled “THIS SIDE UP”. Turn the printer on by **HOLDING the power button down** (approx. 3 seconds) until the LED comes on. If the printer is functioning properly and ready to print, the LED will flash green twice every second.

Warning: Forcing the cable upside down will cause damage to the connector pins on the LifeDop, cable and printer. Note label “THIS SIDE UP”.

Note: When turning the printer on or off, it is important to remember to hold the button down, approximately 3 seconds, before the printer will respond.



Loading Paper

Warning: Install the paper roll in the printer so the external side (heat sensitive side) of the rolled paper is against the print head (down).

Warning: Do not use printer paper other than the type specified and supplied by Summit Doppler. Other paper types could result in damage or degraded print quality and may void the warranty.



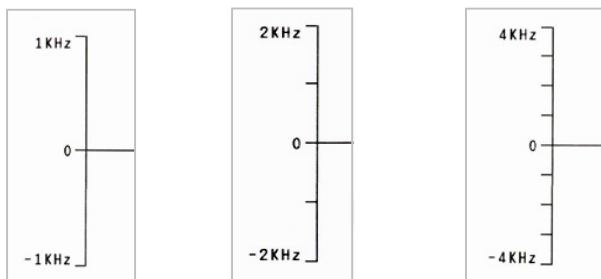
Printer Connections

Printing a Waveform

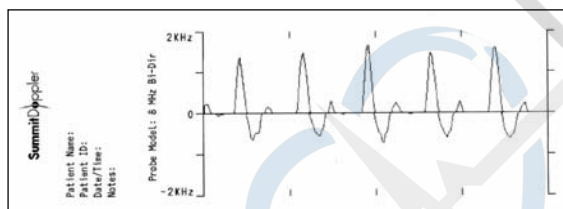
Warning: The print head becomes hot during printing. Do not touch the print head after printing.

Warning: Turn off the printer and check that the head is fully cooled before attempting to fix a paper jam, replacing paper, or removing the print roller for any reason.

Once the printer is operational and the cables are in place, the LifeDop will automatically download the waveform and printing will begin. If the PRINT button is pressed while the printer is connected and ready, printing will start immediately. Waveforms are automatically scaled to a maximum frequency of either 1 KHz, 2 KHz or 4 KHz for optimal waveform height. Markings on the vertical axis are provided every 1 KHz. Printer calibration is not required.



Auto-Scaling – 1 kHz, 2 kHz and 4 kHz



Printout

Blood flow in the direction toward the probe is shown above the baseline. Flow away from the probe is shown below the baseline. These two traces are provided so that flow in both directions can be displayed simultaneously.

Report Generation

Report generation is made very simple with adhesive backed printer paper provided by Summit Doppler - eliminating the need to cut and tape the strip of paper. The label paper backing is pre-cut down the center – fold the paper down the middle and peel from the center. Attach the waveform to the pre-printed ABI assessment Form.

Ankle-Brachial Index / Risk Assessment Form		
Patient Name _____	ID Number _____	Date _____
Risk Factors <input type="checkbox"/> Tobacco Use <input type="checkbox"/> Diabetes <input type="checkbox"/> Heart Disease <input type="checkbox"/> Current Age _____ <input type="checkbox"/> Other _____	<input type="checkbox"/> Hypertension <input type="checkbox"/> Hyperlipidemia <input type="checkbox"/> Stroke/TIA <input type="checkbox"/> Previous Vasc Surgery	Current Symptoms <input type="checkbox"/> Intermittent Claudication <input type="checkbox"/> Numbness, tingling in feet <input type="checkbox"/> Ulcerations <input type="checkbox"/> Other _____
		ABI / Severity of Disease 0.90-1.30 - Normal 0.70-0.89 - Mild 0.40-0.69 - Moderate 0.00-0.39 - Severe
ABI Results <div style="display: flex; justify-content: space-around;"> <div> Right Arm _____ mmHg </div> <div> Left Arm _____ mmHg </div> <div> Left ABI Left Ankle Pressure = _____ mmHg = _____ Higher Arm Pressure _____ mmHg </div> </div> <div style="display: flex; justify-content: space-around; margin-top: 10px;"> <div> Right Ankle _____ mmHg </div> <div> Left Ankle _____ mmHg </div> <div> Right ABI Right Ankle Pressure = _____ mmHg = _____ Higher Arm Pressure _____ mmHg </div> </div>		
		<input type="checkbox"/> LEFT <input type="checkbox"/> RIGHT <input type="checkbox"/> PT <input type="checkbox"/> DP <input type="checkbox"/> BRACHIAL
		<input type="checkbox"/> LEFT <input type="checkbox"/> RIGHT <input type="checkbox"/> PT <input type="checkbox"/> DP <input type="checkbox"/> BRACHIAL
PEEL AND STRIP WAVEFORM		
Summit Doppler Listening to Life™		www.SummitDoppler.com 1-800-554-5090

ABI Assessment Form