

# BeneVision TM80

DISPLAY TELEMETRY TRANSMITTER

## Features and Benefits

- 3.5" color touchscreen LCD
- Gesture-driven for fast, intuitive operation, just like your smart device
- Compact and lightweight - just 7.4 oz (210 g) with batteries and ECG lead set
- Waterproof rated IPX7
- Certified rugged, passing 1.5 m hard surface drop test
- Clear, easy to read HR, respiration, and SpO<sub>2</sub> numerics
- ECG, respiration, and SpO<sub>2</sub> waveforms at the patient
- Multi-vector arrhythmia analysis with atrial fibrillation detection, continuous ST analysis, and continuous QT/QTc monitoring at BeneVision DMS
- Supports 3/5/6-lead ECG lead sets, both reusable and single patient use, for infection control
- Features Masimo® SpO<sub>2</sub> (optional)
- Non-invasive blood pressure provided by patient-worn BP10 (optional); measurements sent to BeneVision DMS via wireless pairing with TM80
- Operates in 802.11n dual band
- Supports "Find my Telepack" capability with BeneVision DMS
- Flexible power choices include 3 AA or rechargeable lithium-ion battery packs
- Battery charger (optional) for TM80 and TD60
- Run time up to 36 hours



## Ambulatory monitoring to support your workflow

The **BeneVision TM80 Display Telemetry Transmitter** offers advanced technology for early detection of an ambulatory patient's changing condition. The 3.5" color display shows ECG, respiration, and SpO<sub>2</sub> waveforms with associated numerics. Touchscreen technology using intuitive gestures provides access to critical information.

Rugged and reliable, TM80 meets the 1.5 meter drop test and is IPX7 waterproof rated. Power options include a rechargeable lithium ion battery pack that provides impressive runtime on a single charge, serving clinicians well in high occupancy care areas. With the BP10 NIBP Module, easily flex your monitoring capability for a specific patient by adding blood pressure monitoring; BP10 wirelessly pairs to TM80, sending data to BeneVision DMS and the EMR. TM80 leverages standard Wi-Fi technologies to provide an expanded number of devices within large coverage areas.

**BeneVision TM80** – powerful, flexible and connected to meet the ambulatory monitoring needs across your healthcare organization.

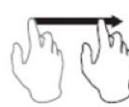
**mindray**

# BeneVision TM80 DISPLAY TELEMETRY TRANSMITTER

## Easy operation with intuitive gestures



**Tap** – to select a function or select a parameter to configure



**Drag** – from the top to toggle between landscape and portrait modes  
– from the bottom to access configured Quick Keys



**Flick** – to scroll through waveforms, numerics, and menus

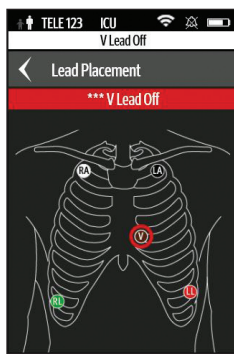


View additional QRS complexes using landscape mode

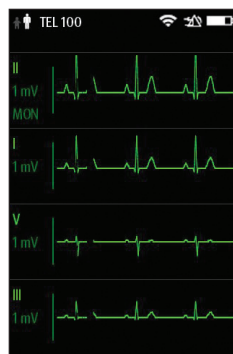
## Fast access to clinical information



Main Screen is configurable based upon preference  
Quick Keys provide access to common functions



Lead Placement tool aids troubleshooting, indicating missing or loose electrodes



Up to seven ECG waveforms can be viewed with a flick of the display

## Optional NIBP Module



BeneVision BP10 provides non-invasive blood pressure measurement. BP10 wirelessly pairs to TM80, sending data through to BeneVision DMS and the EMR.

Mindray North America  
800 MacArthur Blvd., Mahwah, NJ 07430  
Tel: 800.288.2121 Tel: 201.995.8000 Fax: 800.926.4275 [www.mindray.com](http://www.mindray.com)

©2018 Mindray DS USA, Inc.  
Mindray® is a registered trademark of Shenzhen Mindray Bio-Medical Electronics Co., Ltd. All rights reserved.  
All brands and product names are trademarks of their respective owners. 07/18 P/N: 0002-08-37046 Rev B

**mindray**  
NORTH AMERICA