



Integrated Guidance in Interventional Cardiology

ACUSON SC2000 PRIME
Ultrasound System

Release
5.1

The ACUSON SC2000 PRIME system provides next level visualization and quantification with AI-powered applications for your 2D and 3D TTE, TEE, and ICE to handle all your echo-guided structural heart disease (SHD) procedures. With TrueFusion*, you can now efficiently guide your SHD interventions with a truly integrated solution combining echo and fluoro images.



Z6Ms True volume TEE



ACUSON AcuNav V ultrasound catheter

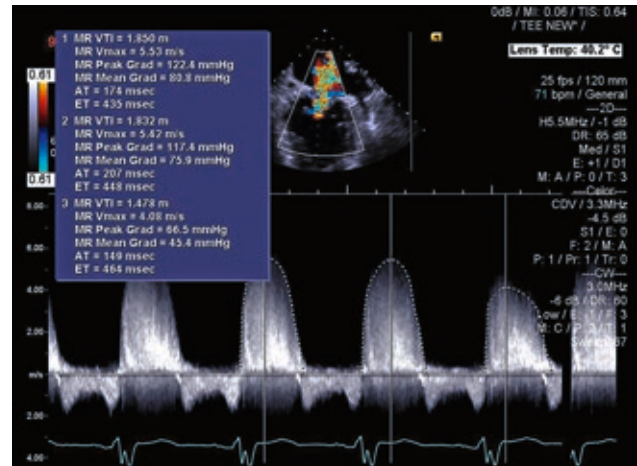
A complete system solution for interventional cardiology, the ACUSON SC2000 PRIME can help improve patient management from diagnosis to pre-procedural planning, from intervention to follow-up.

*TrueFusion represents a workflow consisting of syngo® TrueFusion and TrueFusion™ echo-fluoro guidance.

Diagnostic Assessment

eSie Measure Workflow Acceleration

Improve quality and reproducibility by integrating one-click automated measurements and eSie Scan protocols to ensure complete, consistent exams in less time.

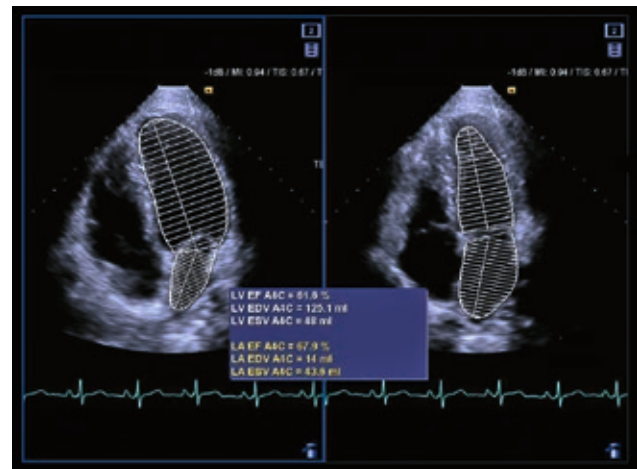


51%
Less hand movements

33%
Reduced length of procedure

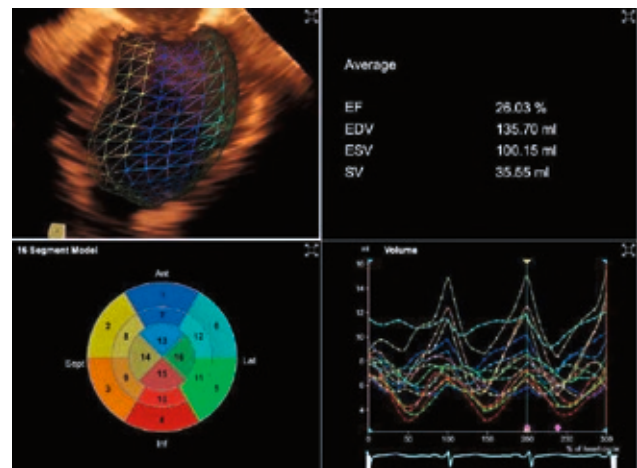
eSie Left Heart

Achieve one-click reproducible ejection fraction (EF) measurements for both the left and the right ventricle without manual tracing.



eSie LVA Volume LV Analysis

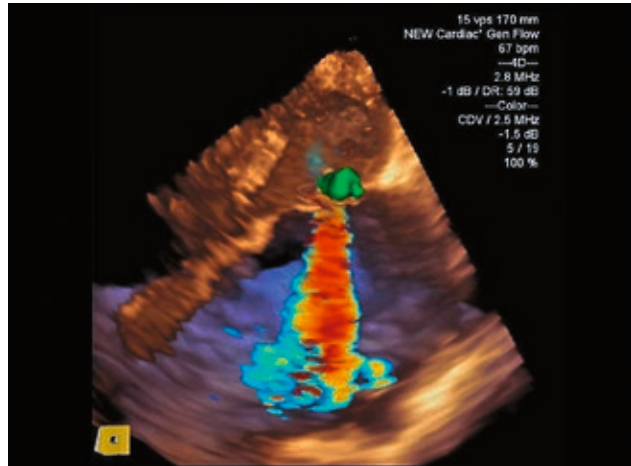
Increase EF reproducibility and accuracy with automated one-click quantification of 3D TEE or TTE.



Pre-procedure Planning

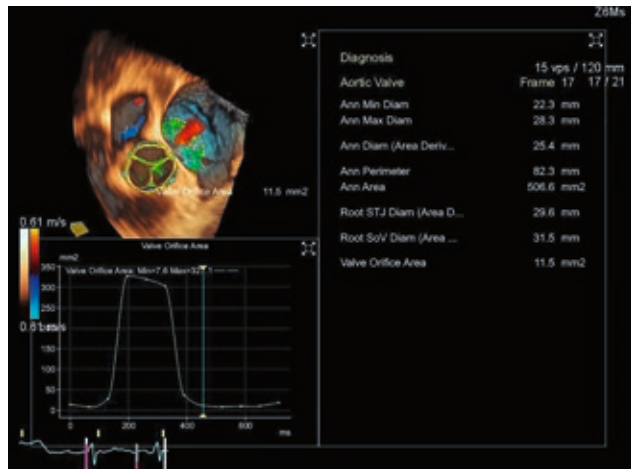
eSie PISA Volume Analysis

Quantify regurgitant volume and EROA in 3D without geometric assumptions.



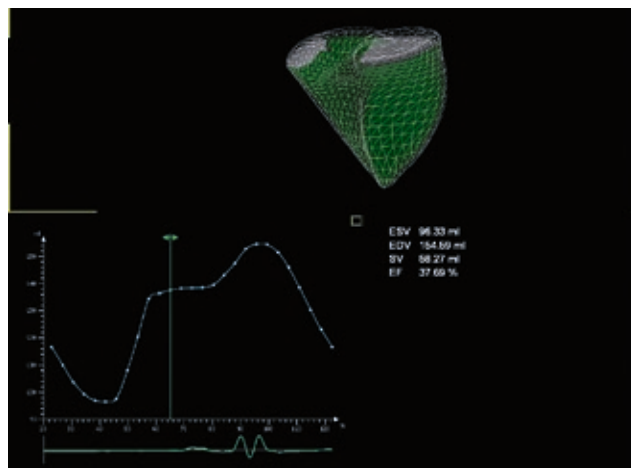
eSie Valves Advanced Analysis

Improve workflow with 3D modeling of the mitral and aortic valves within seconds with up to 60 measurements for diagnosis, intervention and surgery.



Right Ventricular Analysis (RVA)

Volume RVA is designed specifically to provide you the required insights for the complex anatomy of the right ventricle. Analysis includes Global Volume Curve and Ejection Fraction.

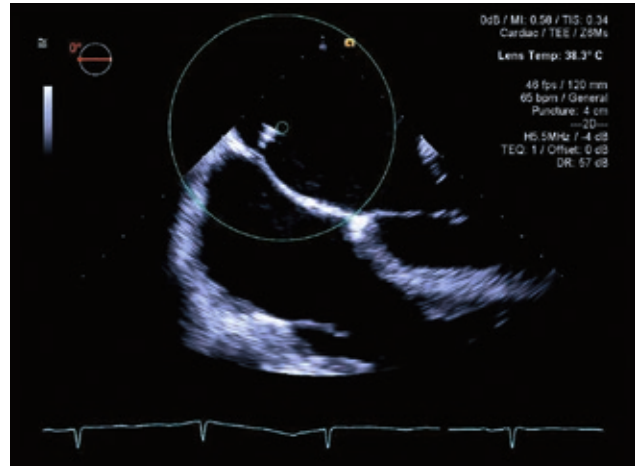


Siemens Healthineers offers three shared service cardiovascular products: ACUSON P500, ACUSON S Family, ACUSON X700, and ACUSON Juniper ultrasound systems. The ACUSON SC2000 PRIME is the dedicated premium cardiovascular ultrasound offering in Siemens Healthineers cardiology segment.

Therapy

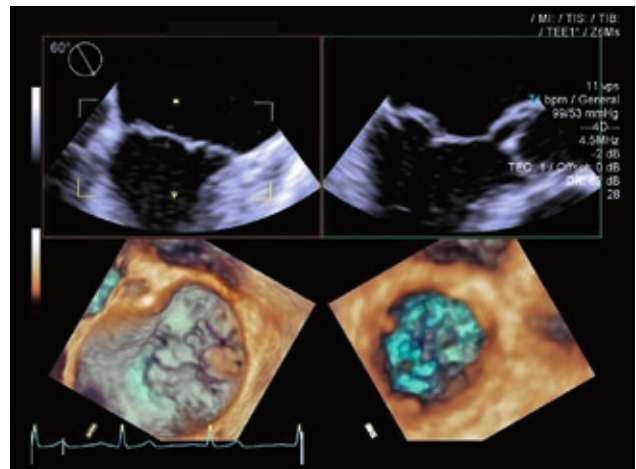
Septal Guide

Septal puncture is a critical step for interventions in the left heart. With septal guide, you can guide real-time monitoring of the puncture to help ensure proper catheter placement in an intervention.



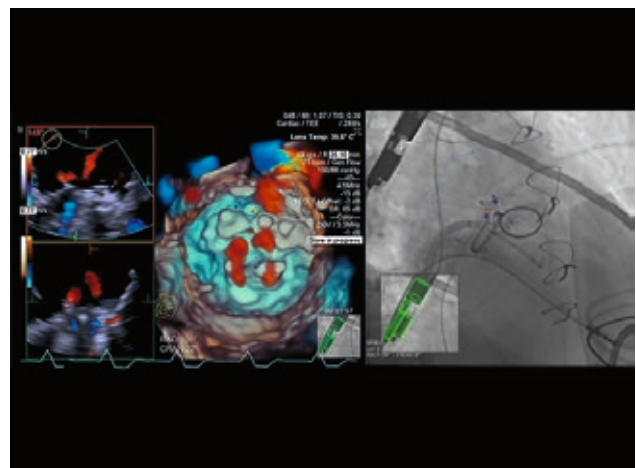
Dual V & D'Art

Easily crop and view real-time 3D anatomy and flow for a mitral valve from both atrial and ventricular perspectives simultaneously for enhanced device guidance.



TrueFusion* Echo-fluoro Guidance

Simplify your complex procedures with integrated real-time echocardiography and X-ray imaging with TrueFusion. Combine up to 15 marker overlays and valve models for efficient guidance that could potentially lower dose, reduce contrast and decrease time during procedures.

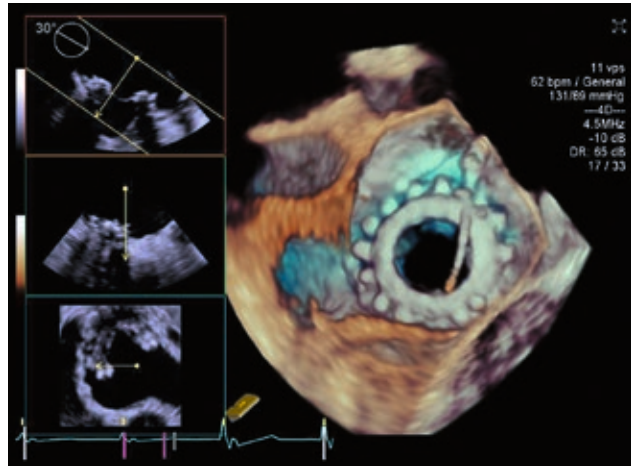


*TrueFusion represents a workflow consisting of syngo® TrueFusion and TrueFusion™ echo-fluoro guidance.

Follow-up

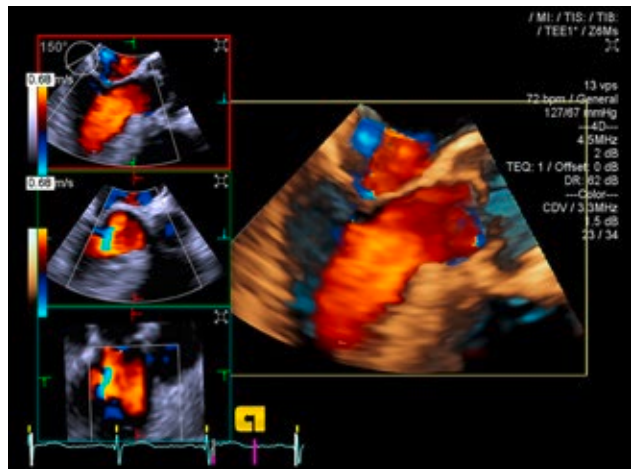
Real-time Volume

See the heart in 3D beat by beat in real-time, without stitching, just as easily and real-time as your 2D imaging.



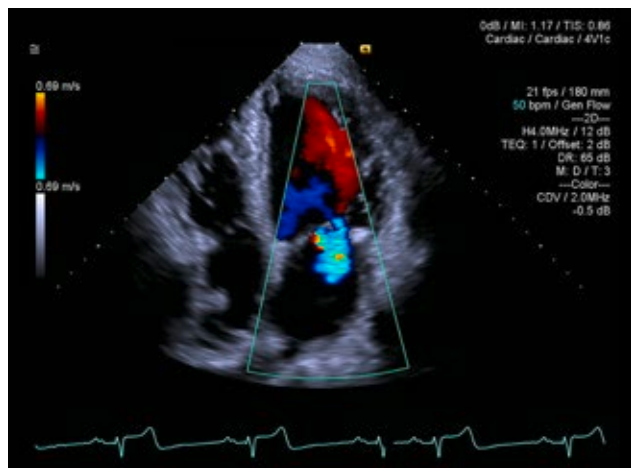
Volume color Doppler

Real-time volume and volume color Doppler is essential for diagnosis and interventions. It provides real-time assessment of anatomy and physiology at clinically relevant volume size and volume rates without stitching, even for patients with arrhythmia.



True Fidelity color Doppler

Improve diagnostic confidence with exceptional color resolution and better physiological presentation of color while reducing artifact and color flash.



The products/features are not commercially available in all countries. Due to regulatory reasons their future availability cannot be guaranteed. Please contact your local Siemens Healthineers organization for further details.

ACUSON SC2000, ACUSON P500, ACUSON S Family, ACUSON Juniper, ACUSON X700, eSie PISA, eSie Valves, eSie Flow, eSie Measure, eSie Left Heart, eSie LVA, True Fidelity, and TrueFusion are trademarks of Siemens Medical Solutions USA, Inc.

syngo® is a registered trademark owned by Siemens Healthcare GmbH.

Siemens Healthineers Headquarters

Siemens Healthcare GmbH
Henkestr. 127
91052 Erlangen, Germany
Phone: +49 9131 84-0
siemens-healthineers.com

Legal Manufacturer

Siemens Medical Solutions USA, Inc.
Ultrasound
685 East Middlefield Road
Mountain View, CA 94043, USA
Phone: +1-888-826-9702
siemens-healthineers.com/ultrasound