



IQmark™

Diagnostic PDA Software

Opening Windows® to the World of Medicine



Digital ECG PDA

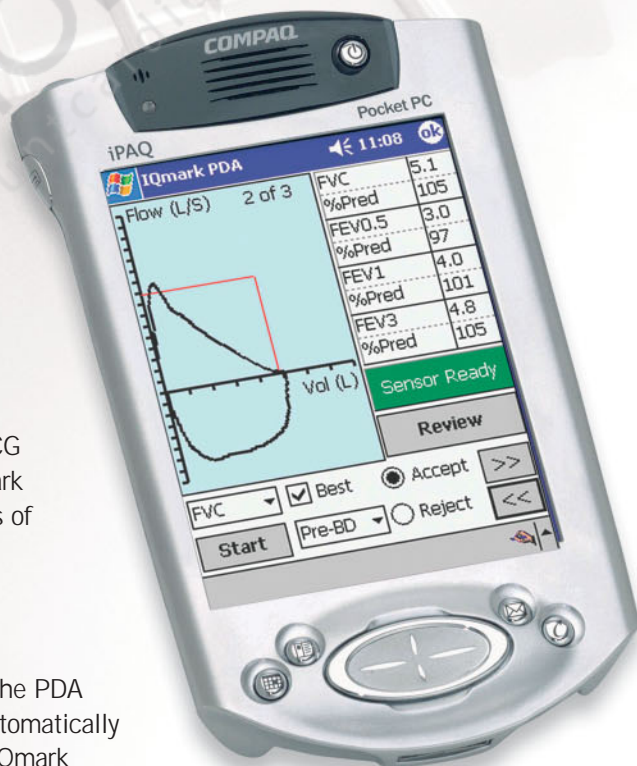
When used in conjunction with the IQmark Digital ECG PDA and the IQmark Digital SpiroPDA, the new IQmark Diagnostic PDA software enables you to run hundreds of tests on a Pocket PC-based device - like the HP® and Compaq® iPAQ® - without the need and expense of transporting large equipment from room to room.

Managing the test data is very easy. Simply connect the PDA device to its docking station and IQmark Sync will automatically transfer the stored tests from the PDA device to the IQmark Diagnostic Workstation for interpretation, measurements, editing and printing. IQmark Sync also works with Infrared (IR) or wireless network connectivity.

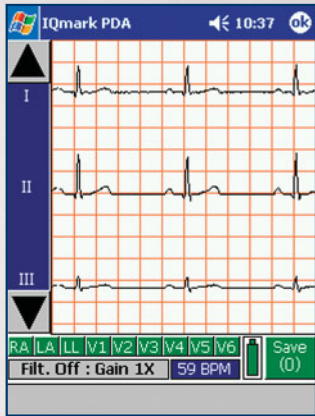
Advantages

- Capable of storing hundreds of patient tests
- Displays test data in real time
- Works on Microsoft® Pocket PC platforms
- Creates a portable, lightweight pocket size PDA (Physician's Diagnostic Assistant)
- Download tests via standard docking station, IR or wireless network to the IQmark Diagnostic Workstation for interpretation, editing, storage and management

The latest software product in the IQmark™ family elevates your ECG and Spirometry capabilities to new, more efficient levels of portability, cost-savings and efficient patient care. The IQmark Diagnostic PDA software is perfect for use in the office, clinics and medical centers as well as for remote and emergency situations.



Digital SpiroPDA



Live ECG or Spirometry Tests

Enter Patient Data

Patient List/Search Screen

Enter Patient Vital Signs

IQmark™

Diagnostic PDA Software

Features

- Acquisition of ECG and Spirometer data
- Search existing patients or create new patient record on location
- Enter new patient demographics and vital signs

Minimum System Requirements

Platform	Microsoft Pocket PC, Pocket PC 2002 or 2003
Compatible Pocket PC devices*	HP/ Compaq iPAQ 3600, 3700, 3800, 3900, 5400, 5500 series Dell Axim Model X5 Entry & Advanced
Serial Port speed	115Kbaud. Serial port may be built into the Pocket PC or available with an add-on PC Card serial adapter
RAM memory	16MB or greater

*Note: Please contact Midmark Diagnostics Customer Service for the latest list of compatible devices

For more information or a demonstration, contact your Midmark dealer or Call: 1-800-MIDMARK Fax: 1-800-365-8631
Outside the U.S.A. Call: 1-937-526-3662 Fax: 1-937-526-4604
Technical Service: 800-624-8950 · 310-530-5955 · FAX 310-530-2697
Visit our website at midmarkdiagnostics.com or midmark.com

©Midmark Corporation 2003
60 Vista Drive P.O. Box 286 Versailles, Ohio 45380-0286
Products subject to improvement changes without notice.
Litho in U.S.A. · 007-0385-00 · 2/04

IQmark™

Digital ECG PDA

Intended Use

To provide 12-lead resting electrocardiogram which permits the detection of abnormalities in the transmission of the cardiac impulse through the heart muscle and serves as an important aid in the diagnosis of heart ailments.

Features

- View 12-lead live ECG in 3-lead groups
- Color-coded lead-quality indicators
- Gain and Filters settings
- Perform immediate ECG for STAT situations

Physical Characteristics

- 2.8 in. (7.1 cm) x 5 in. (12.7 cm) x .88 in. (2.24 cm) (W x L x H)
- 11 oz. (ECG unit with batteries)
- Two 1.5V AA alkaline batteries

IQmark™

Digital SpiroPDA

Intended Use

The IQmark Digital SpiroPDA is intended for use as a diagnostic spirometer for pulmonary function evaluation and data management.

Features

- View live FVC, VC and MW tests
- Automatic test acceptability statements
- Automatic best test selection
- Pre/Post Bronchodilator Testing

Physical Characteristics

- 1.5 in. (3.8 cm) x 2.25 in. (5.7 cm) x 7 in. (17.8 cm) (W x L x H)
- 10 oz. (unit with batteries)
- Two 1.5V AAA alkaline batteries

IQmark™

Sync

Features

- Automatically synchronizes the patient list between the IQmark Diagnostic Workstation and the IQmark Diagnostic PDA
- Automatically transfers tests and vitals to the IQmark Diagnostic Workstation database
- Provides full interpretations and measurements from the IQmark Diagnostic Workstation
- Synchronizes through standard docking station, IR or wireless network
- Print After Analysis option prints the test report(s) automatically when downloaded to the IQmark Diagnostic Workstation

Minimum System Requirements IQmark Workstation & IQmark Sync

- Microsoft Windows-based PC with Windows 98/2000/XP
- Hard disk with a capacity of at least 200MB of free space
- CD-ROM/DVD Drive
- Intel Pentium-class microprocessor or compatible
- VGA display with minimum 256 colors
- Microsoft-compatible mouse and keyboard
- 16MB RAM for Windows 98
- 64MB RAM for Windows 2000/XP



Diagnostics Group