

P25

Color
Doppler
Trolley
System



P25



The newest color Doppler system from Medisono, is specially designed for full range applications, including Radiology, Cardiovascular, OB/GYN and others. As a workflow-enhanced ultrasound systems, P25, combining 17" monitor with touch panel together, will provide the most smoothly work flow which doctors have never experienced before.

Features

Innovative Ergonomic Design

17" high resolution widescreen LCD with articulated arm to minimize the fatigue of eyes and shoulders during daily scanning. The smart touch screen providing the fastest way to adjust parameters and control the system. Convenient front and back handles and four wheels with lock can be used for transportation with high mobility. Standard four sockets are universal for all types of transducers, including the special probes like TEE, 4D, Bi-plane and intraoperative transducers.

High Quality Noise Filter:

HQNF technology can efficiently reduce Doppler signal noise of ultrasound system, providing improved color flow and spectral Doppler images.

Multi-beam Parallel Processing Technology

Multi-beam parallel processing technology can enhance lateral and time resolution, so that it can dramatically help the diagnosis of cardiovascular disease and also lays a good foundation on real-time 3D imaging.

μ -Scan

μ -Scan uses real-time image processing algorithm to eliminate speckle and noise artifact, enhancing tissue margins and borders by correcting discontinuity between different regions allowing improved visualization of real tissue information.

M-tuning

M-tuning is one button image optimization technology, providing you quick B-mode and Spectral Doppler image optimization by clicking one button. It can shorten examination time and ensure optimal results and more accurate diagnosis.

Real-time 3D(4D)

This premium technology is often used in obstetric ultrasonography, providing real time three dimensional images of the fetus. Many high-end features, such as multi-slice and clip plane, will help you make detailed and accurate analysis.



Technical Specifications

Advanced Technologies

Digital Front-End
Dual-Beam Processing
Compound Imaging
Micro Scan Processing
Harmonic Imaging
High Pulse Repetition Frequency
Panoramic Imaging
4D Imaging
Graphic Exam Icon
Modularized touchscreen human-machine interaction technology

Applications

Abdominal
Cardiology
Obstetrical
Gynecological
Musculoskeletal
Vascular
Urological
Small Parts And Superficial
Pediatric
Anaesthesia

Scanning Methods

Electronic Convex Sector
Electronic Linear
Electronic Phased Array Sector

Sweep Angle

Curved Probe: 70 degree or more
Phased Array Probe: 90 degree or more
Micro-curved Probe: 193 degree or more

Operating Modes

B-Mode
M-Mode
TDI-Mode
Color Flow Mode(CFM)
Power Doppler Imaging(PDI)
Pulse Wave Doppler(PWD)
Continuous Wave Doppler(CWD)
3D/4D Imaging
Color M Mode
Steer M-Mode

Display Modes

Gray-scale imaging
Color: Color Doppler, Power Flow and Directional Power Flow Imaging, TDI
THI (Tissue Harmonic Image)
Dual B, Quad Display
B and M, display format selectable
B and Doppler
B+Color
Dual B(Flow)
Triplex mode: B, Flow, and PW/CW
Doppler
B, Flow, and Color M
Simultaneous Refresh Display
Variable screen size: Change the screen ratio of 2D and Doppler/M in duplex or triplex mode
Panoramic Imaging
Compound Imaging
Trapezoid Imaging

Standard Features

Frame Rate: 750 frames/sec or more
Display Gray Scale:256 levels
Digital Channel Number:1024
Probe Elements: Up to 256

Integrated Data Management System

Hard Disk memory capacity: 320 G
Storage media:USB Drive

Storage of Images and Cine

Cine loop: 10000 frames or more
Cine loop time:60 seconds or more
Real time single/dual static and dynamic
Image storage
Archived image can be viewed on PC
Cropboard function: in Freeze Mode
Cine play back mode for Dop.
Doppler Cine Sound Play Back Function

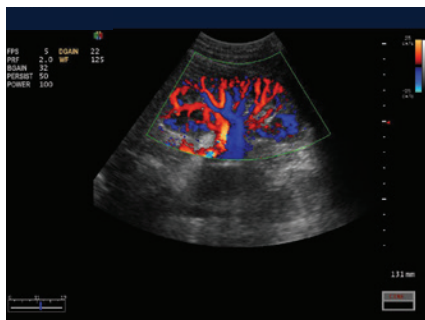
Electrical Power

Voltage:100/220 Volts AC
Current: 3.15 Amps
Frequency:50/60Hz

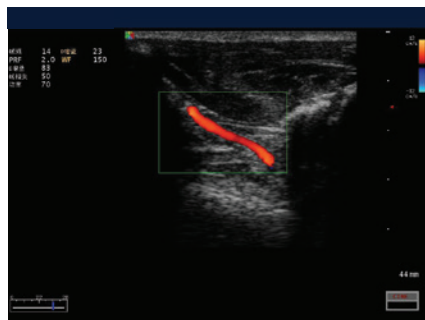
Probe Connectors

Active Connectors: 3 connectors

Screen Samples



Kidney Flow



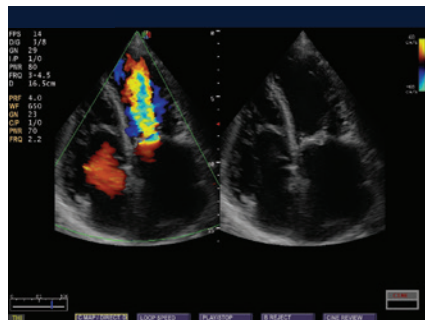
Palm Artery



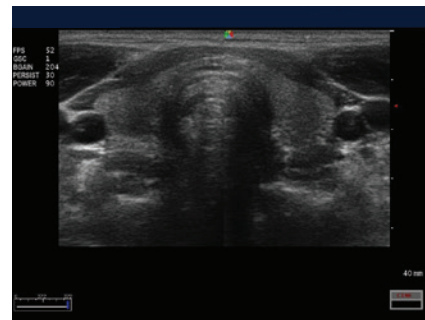
Fetus



3D



Mitral Stenosis



Thyroid Merge Image

Transducers

- Convex
- Linear
- Transvaginal
- Transrectal
- Micro-convex
- Bi-plane
- Phased array
- TEE
- Pediatric TEE
- Intraoperative
- Volume 4D
- Veterinary
- Steel Biopsy Kits
- Disposable Biopsy Kits



MEDISONO
 3511 Silverside RD.
 Wilmington, DE 19810
 United States
 302-451-9234
 info@medisono.com
www.medisono.com