

UP-51MD

Color Video Printer

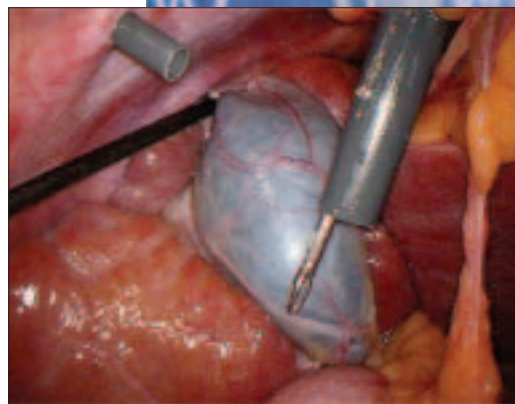
The Sony UP-51MD series medical grade color video printer is remarkable for its ability to produce extremely high resolution prints with an incredible print speed of only (20) seconds. UP-51MD series printers and print media feature Sony's new Hi-Eye-Q™ Quality Imaging System to deliver incredible print speed, accurate print counts, easy color setup and exceptional print quality. A new highly durable print head along with additional print engine enhancements result in long-lasting, reliable image reproduction. The UP-51MD series printers are ideal for image creation in both ultrasound and endoscopy as well as other medical and scientific applications.



UP-51MD



- 295 DPI with 16 million color variations
- 20 Second Print Time
- Worldwide power supply (100 - 240V) and video signal compatibility (MD model)
- On screen display of remaining ribbon/print counts
- Easy color setup system
- 4 MB memory (UP-51MDU)
8 MB memory (UP-51MD)
- Media choices include Standard and Self Laminating
- High quality, curl-free print reproduction

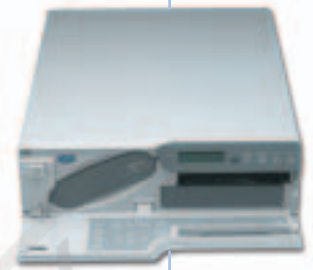


UP-51MD

Specifications

UP-51MD

Printing Method	Dye Sublimation
Resolution	295 DPI (2048 Dots)
Gradations	256 levels each for yellow, magenta and cyan (16.7 million colors per dot)
Effective Print Pixels	NTSC: 976 x 1,920 dots PAL: 1,176 x 1,920 dots
Print Area	NTSC: 5 x 6 1/2" (One Image) PAL: 5 x 6 1/2" (One Image)
Paper Size	A5 (5 7/8" x 8 3/8")
Print Time	NTSC: UPC-510 Media – approximately 20 seconds UPC-540 Media – approximately 31 seconds PAL: UPC-510 Media – approximately 22 seconds UPC-540 Media – approximately 32 seconds
Memory	8 Frame (UP-51MD), 4 Frame (UP-51MDU)
Input/Output	Video, S-Video, RGB
Control Terminals	Remote Control Jack (special mini) – RM5500 Footswitch-1 (stereo mini) – FS-20 Footswitch-2 (D-sub, 9-pin) – FS-30 Footswitch-3 (stereo mini) – FS-36 RS-232C (D-sub, 25-pin) for external computer
Power Requirements	UP-51MDU AC 100-120V, 50/60 Hz. UP-51MD AC 100-120V 50/60 Hz. AC 220-240V 50/60 Hz.
Max. Power Consumption	2.8A (UC), 1.2A (CED)
Dimensions	14 5/8" (W) x 5" (H) x 18 3/4" (D) 370mm (W) x 125mm (H) x 475mm (D)
Weight	Approximately 35 lbs (16 kg)
Supplied Accessories	Operation Manual (1) AC Power Cord (1) Ink Ribbon Holder (1) Paper Tray (1) Print Tray (1) Color Print Pack (20 prints)
Media	UPC-510 Color Print Pack (200 prints) UPC-540 Self-Laminating Color Print Pack (102 prints)
Optional Accessories	UPA-50RH Ink Ribbon Holder RM-5500 Wired/Wireless Remote Commander® Unit RM-91 Wired Remote Control Unit FS-36 Foot Switch FS-30 3-Function Foot Switch FS-20 Foot Switch
Compliance	UP-51MDU – UL-2601-1 Listed CSA: CSA C22.2, No. 601.01 UP-51MD European Compliance: EN 60950, 60601-1 CE: LVD/MDD Listed



UP-51MD Front Panel



UP-51MD Back Panel



UPC-510 Media

SONY

Sony Electronics Inc.
1 Sony Drive, Park Ridge, NJ 07656

www.sony.com/medical

©2002 Sony Electronics Inc. All rights reserved. Reproduction in whole or in part without written permission is prohibited. Features and specifications are subject to change without notice.

All non-metric weights and measures are approximate. Sony and Hi-Eye-Q™ are trademarks of Sony.

Caution: Federal (USA) law restricts this device to sale by or on the order of a physician or other appropriately licensed medical professional.

Caution: See product labeling for indications, contraindications, warnings, cautions and directions for use.

ME-UP51MD-A